

APPENDIX B: SUPPLEMENTARY FIGURES FOR PART 1

BARLEY

Figure B.1. Energy use (million BTU / acre) for barley during 1980-2020

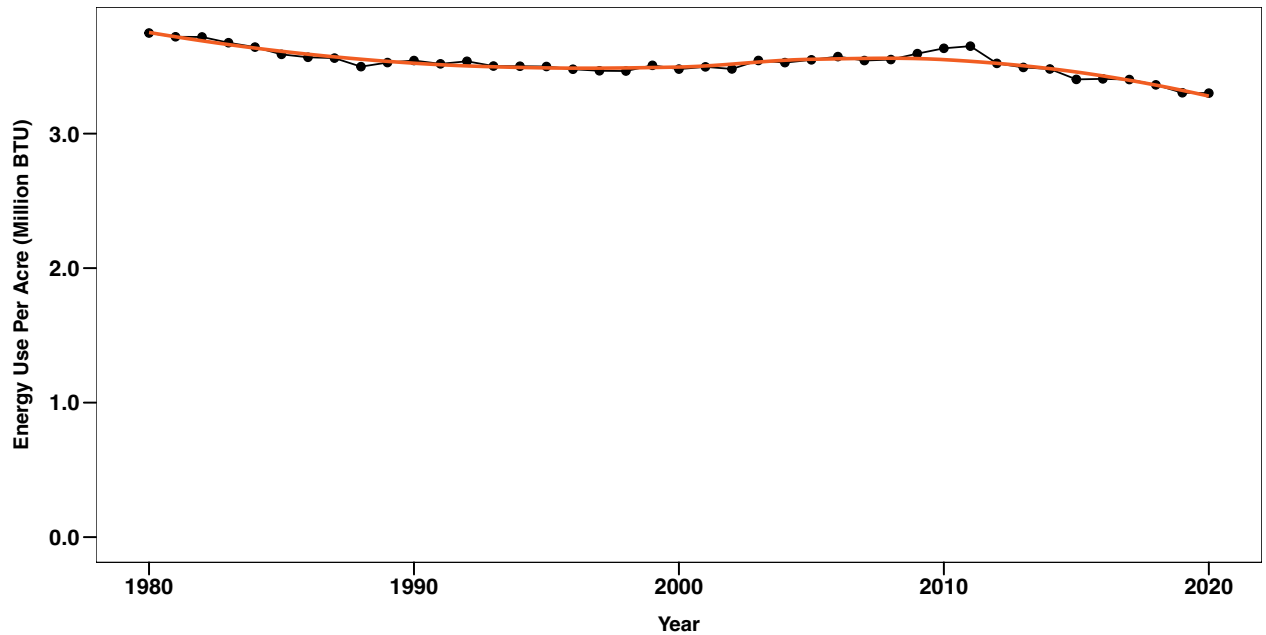


Figure B.2. Energy use efficiency (BTU / bushel) for barley during 1980-2020 colored by component

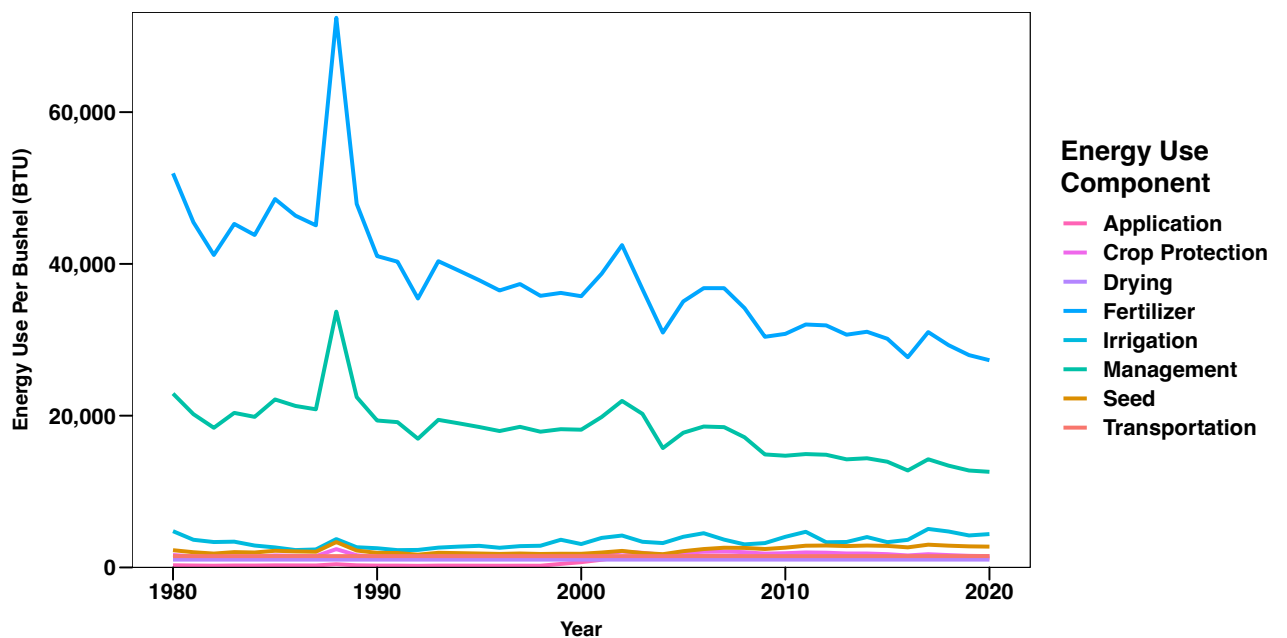


Figure B.3. Greenhouse gas emissions (lb. CO₂ Eq. / acre) for barley during 1980-2020

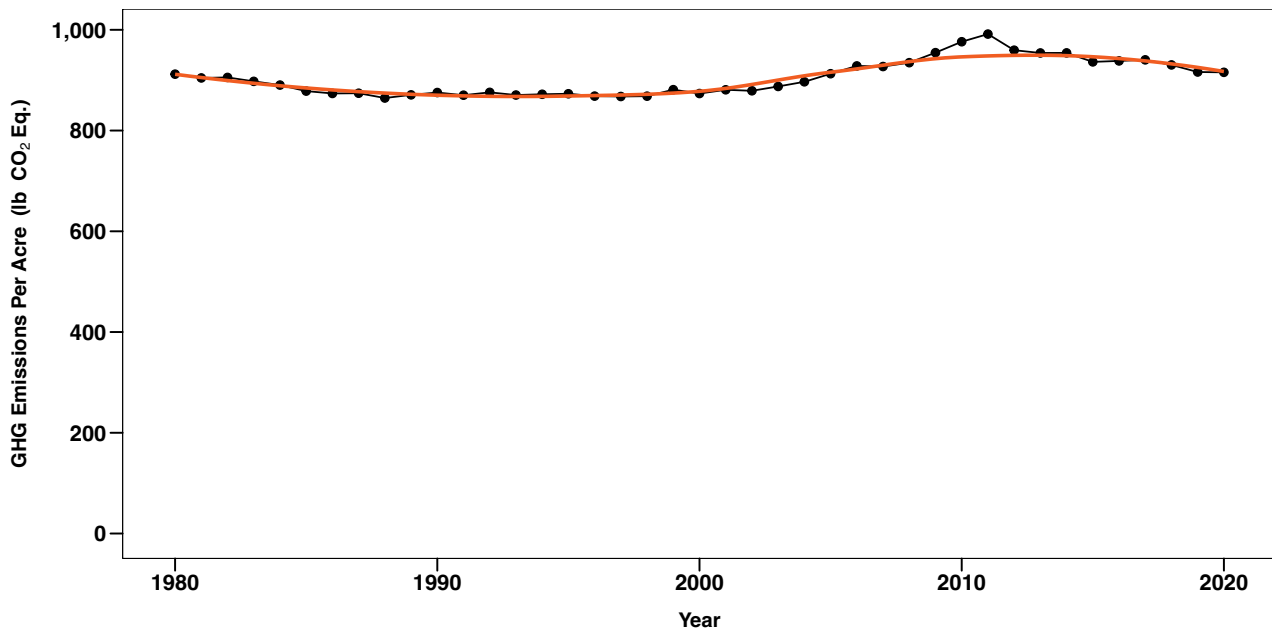
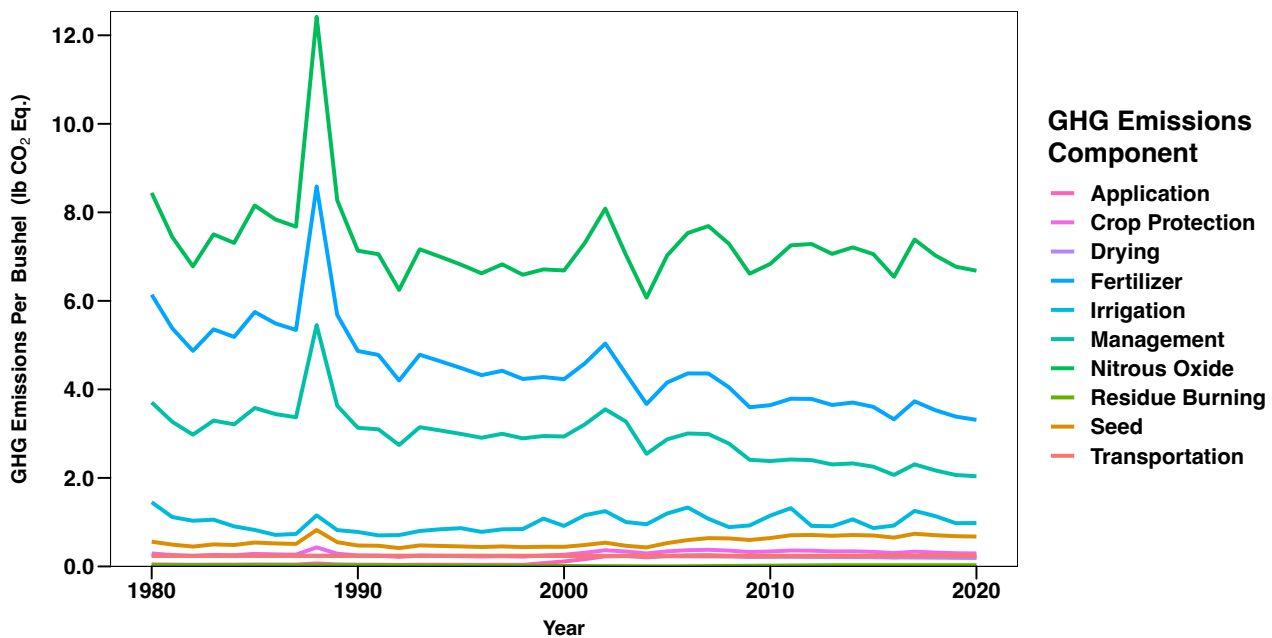


Figure B.4. GHG emission efficiency (lb. CO₂ Eq. / bushel) for barley during 1980-2020 colored by component



CORN (GRAIN)

Figure B.5. Energy use (million BTU / acre) for corn grain during 1980-2020

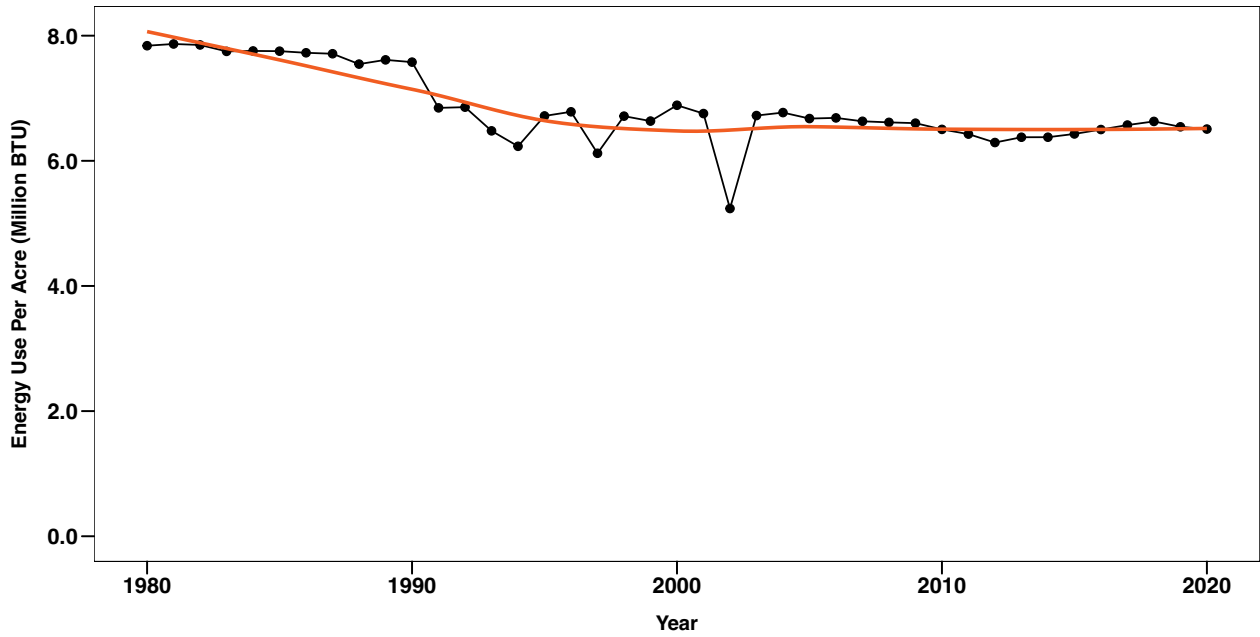


Figure B.6. Energy use efficiency (BTU / bushel) for corn grain during 1980-2020 colored by component

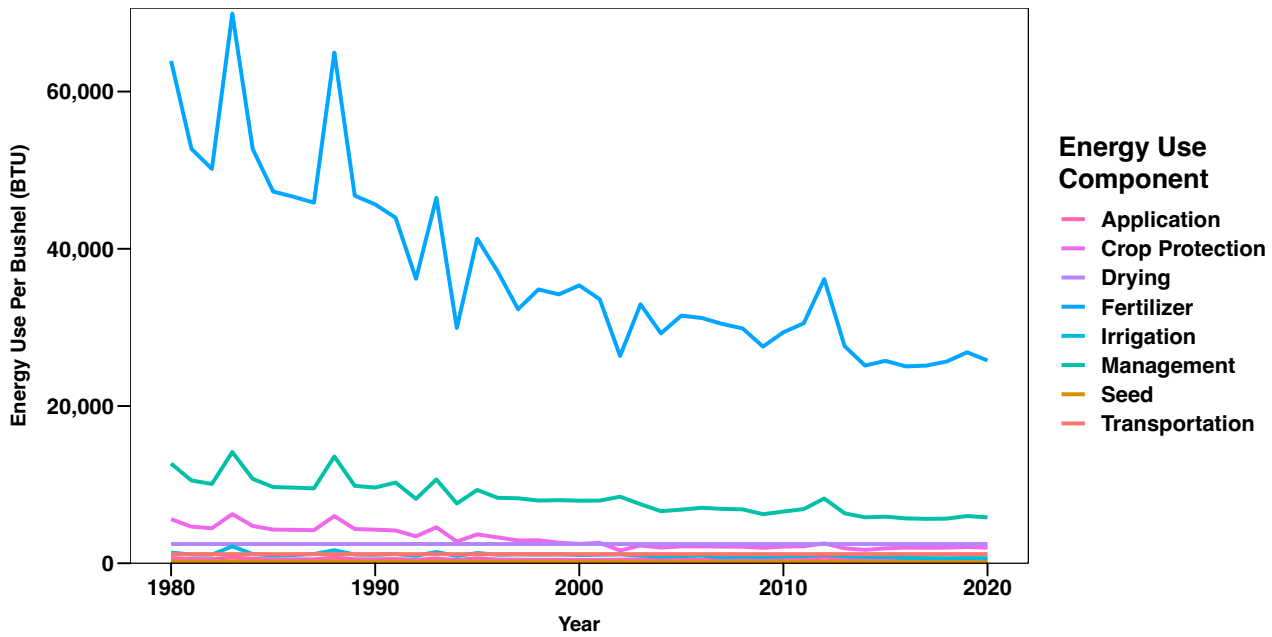


Figure B.7. Greenhouse gas emissions (lb. CO₂ Eq. / acre) for corn grain during 1980-2020

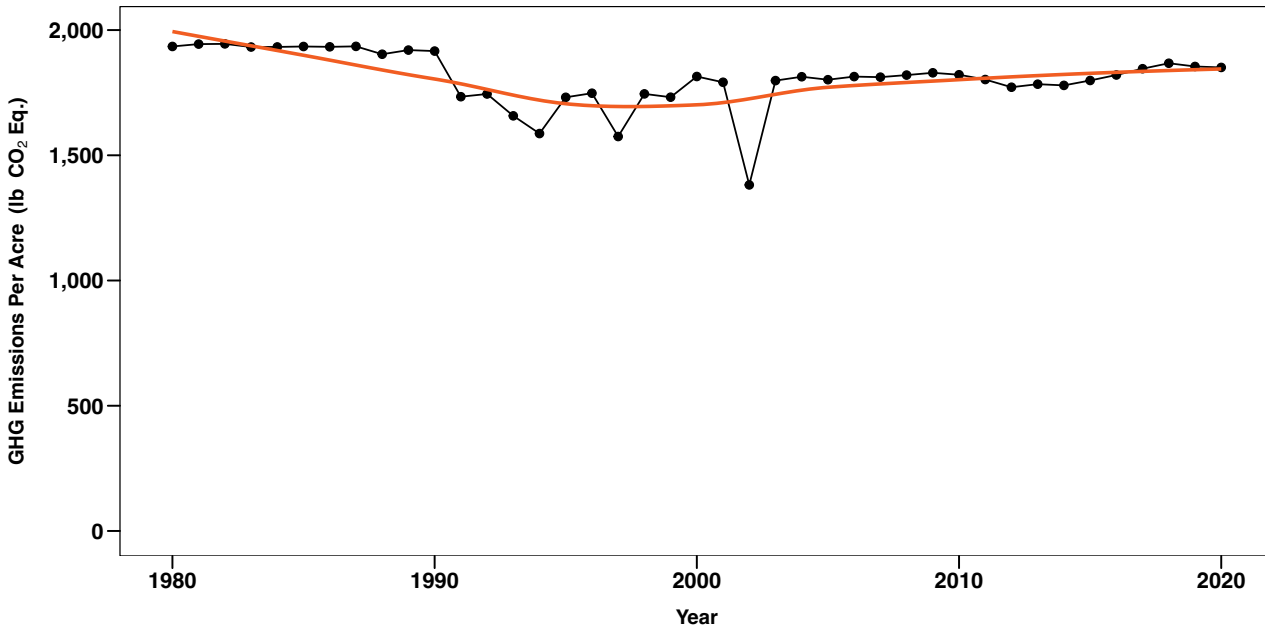
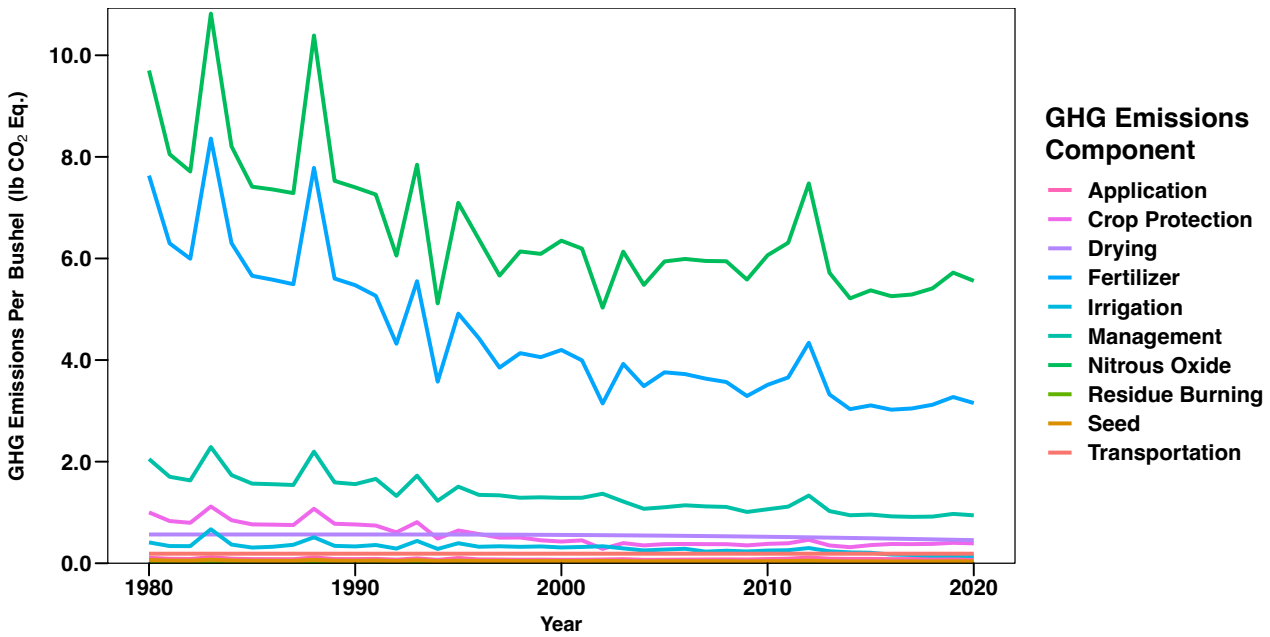


Figure B.8. GHG emission efficiency (lb. CO₂ Eq. / bushel) for corn grain during 1980-2020 colored by component



CORN (SILAGE)

Figure B.9. Energy use (million BTU / acre) for corn silage during 1980-2020

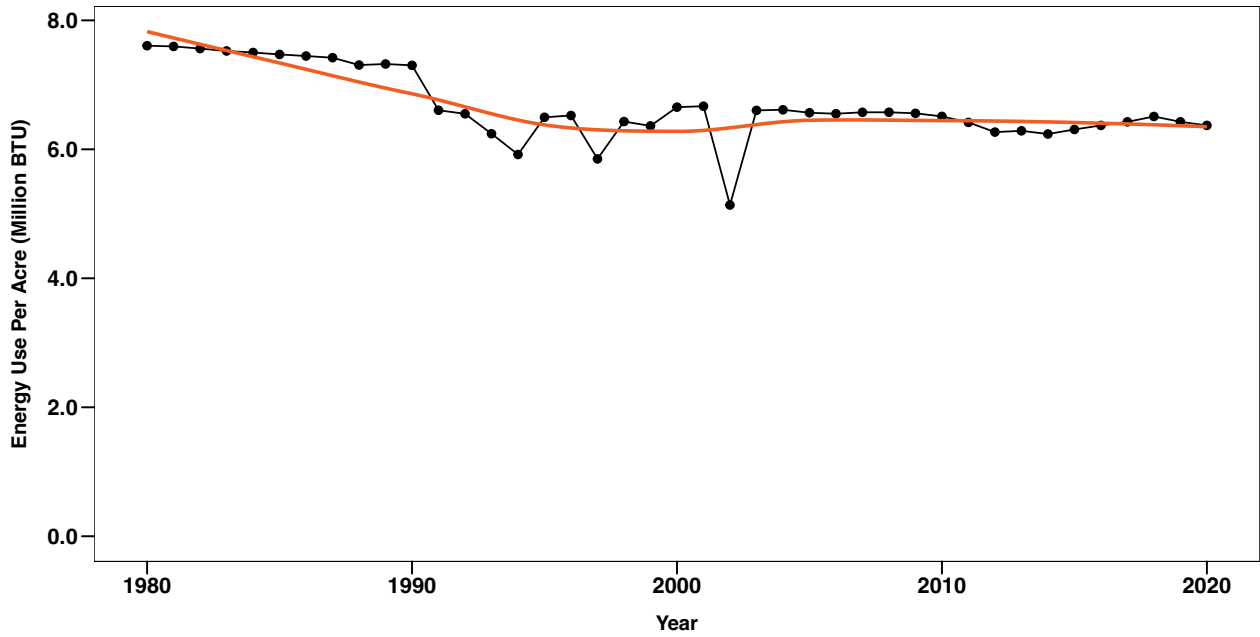


Figure B.10. Energy use efficiency (BTU / ton) for corn silage during 1980-2020 colored by component

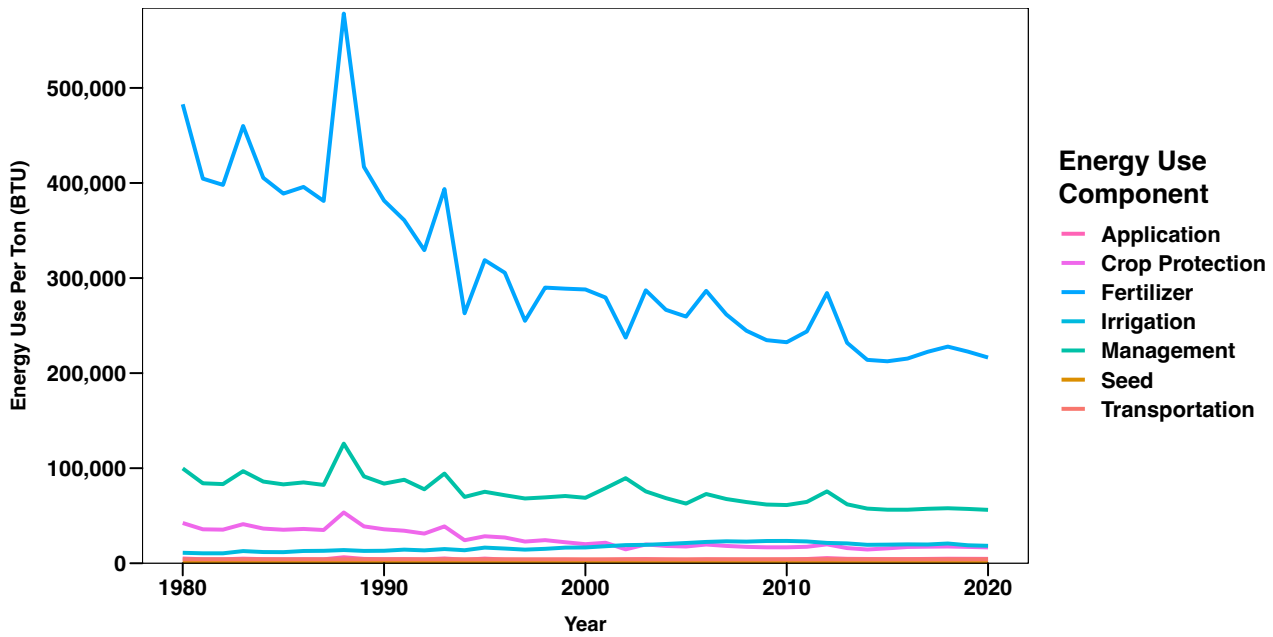


Figure B.11. Greenhouse gas emissions (lb. CO₂ Eq. / acre) for corn silage during 1980-2020

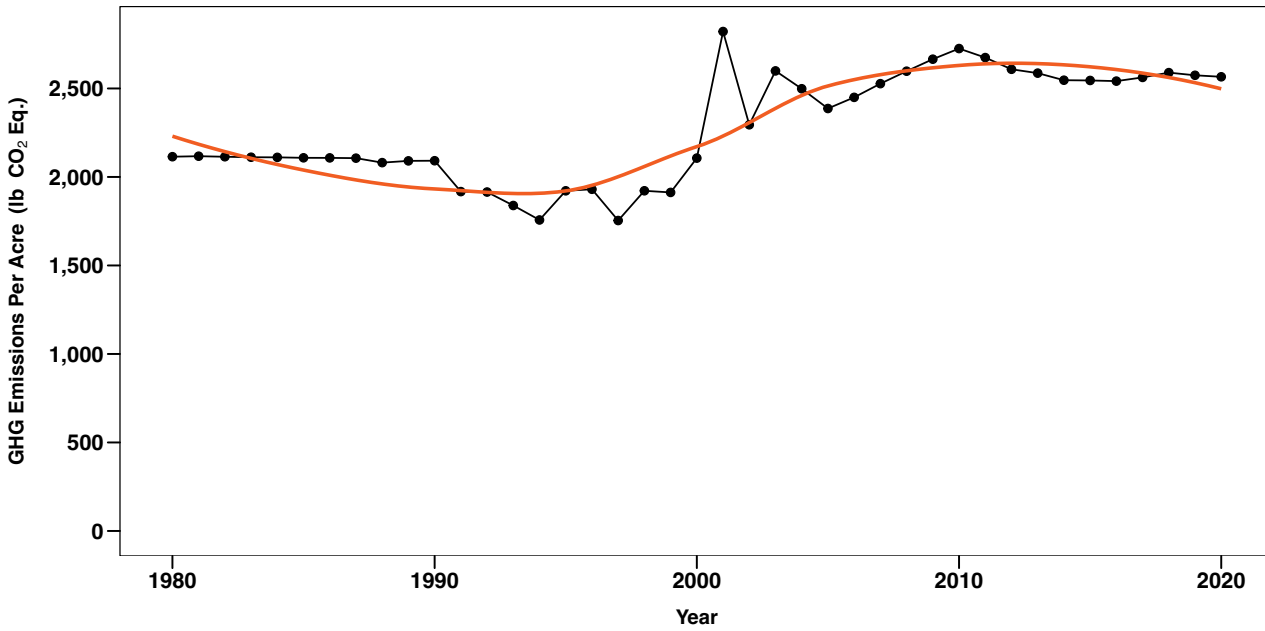
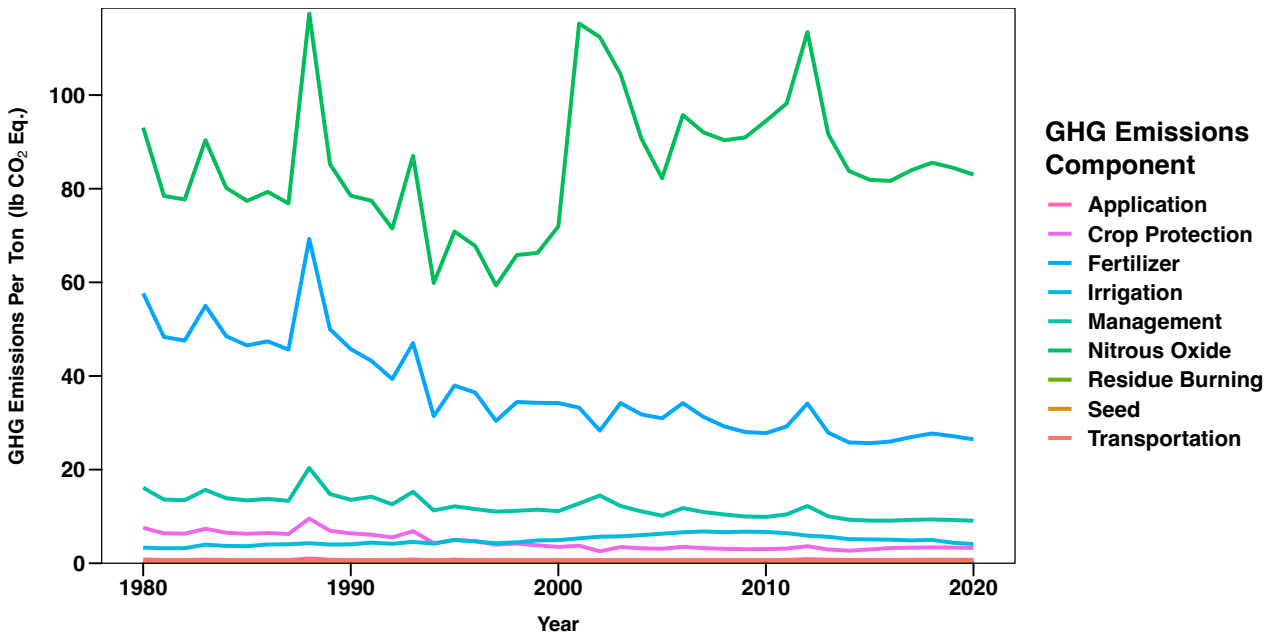


Figure B.12. GHG emission efficiency (lb. CO₂ Eq. / ton) for corn silage during 1980-2020 colored by component



COTTON

Figure B.13. Energy use (million BTU / acre) for cotton during 1980-2020

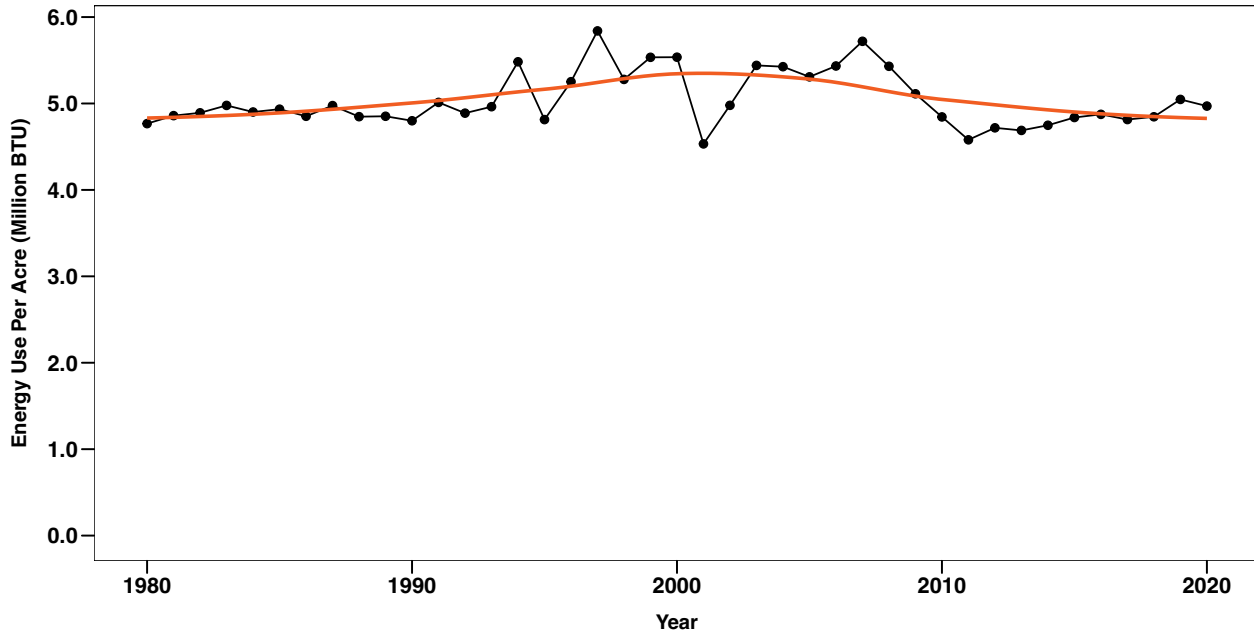


Figure B.14. Energy use efficiency (BTU / lb. of lint) for cotton during 1980-2020 colored by component

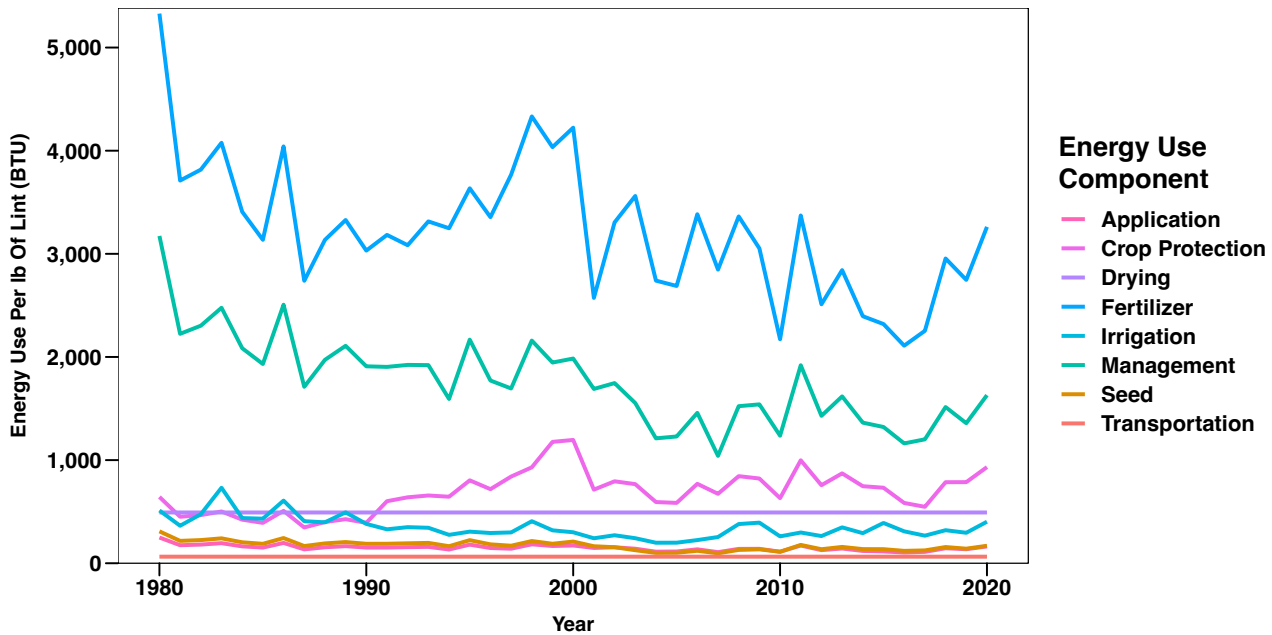


Figure B.15. Greenhouse gas emissions (lb. CO₂ Eq. / acre) for cotton during 1980-2020

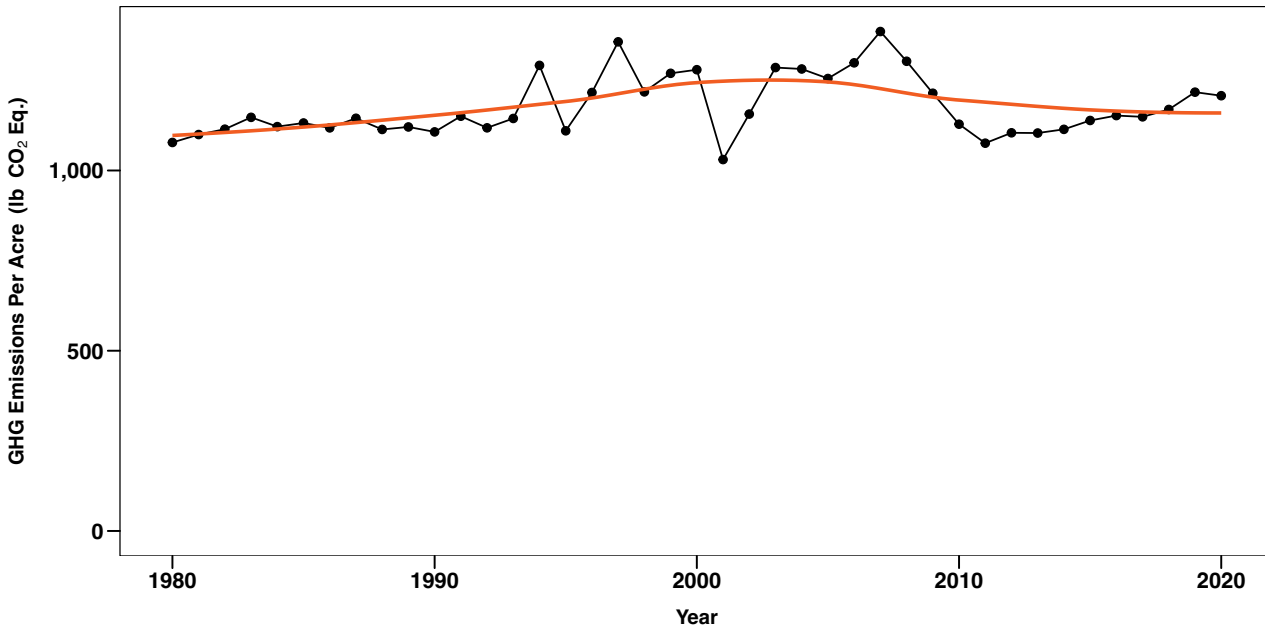
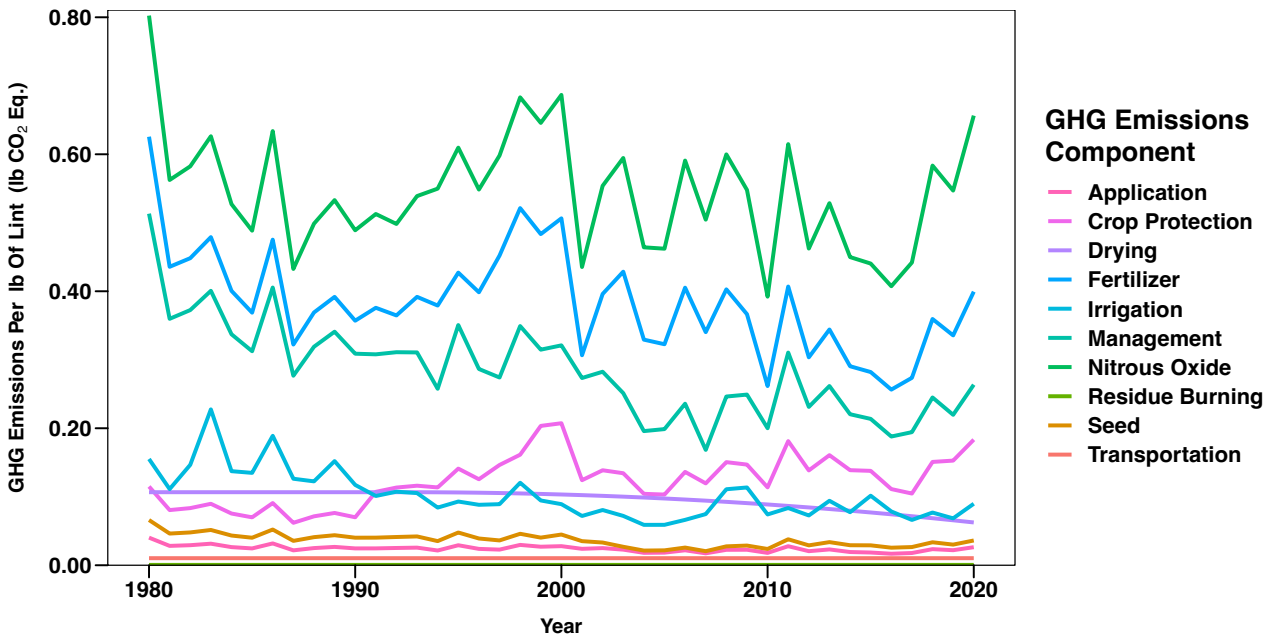


Figure B.16. GHG emission efficiency (lb. CO₂ Eq. / lb of lint) for cotton during 1980-2020 colored by component



PEANUTS

Figure B.17. Energy use (million BTU / acre) for peanuts during 1980-2020

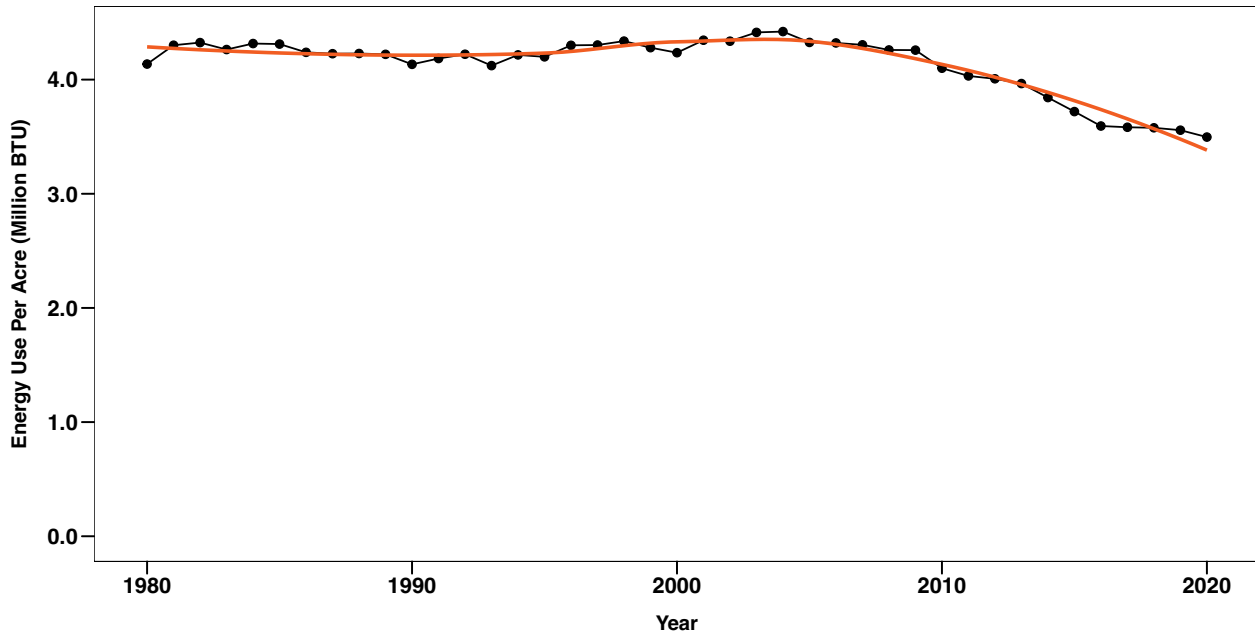


Figure B.18. Energy use efficiency (BTU / lb.) for peanuts during 1980-2020 colored by component

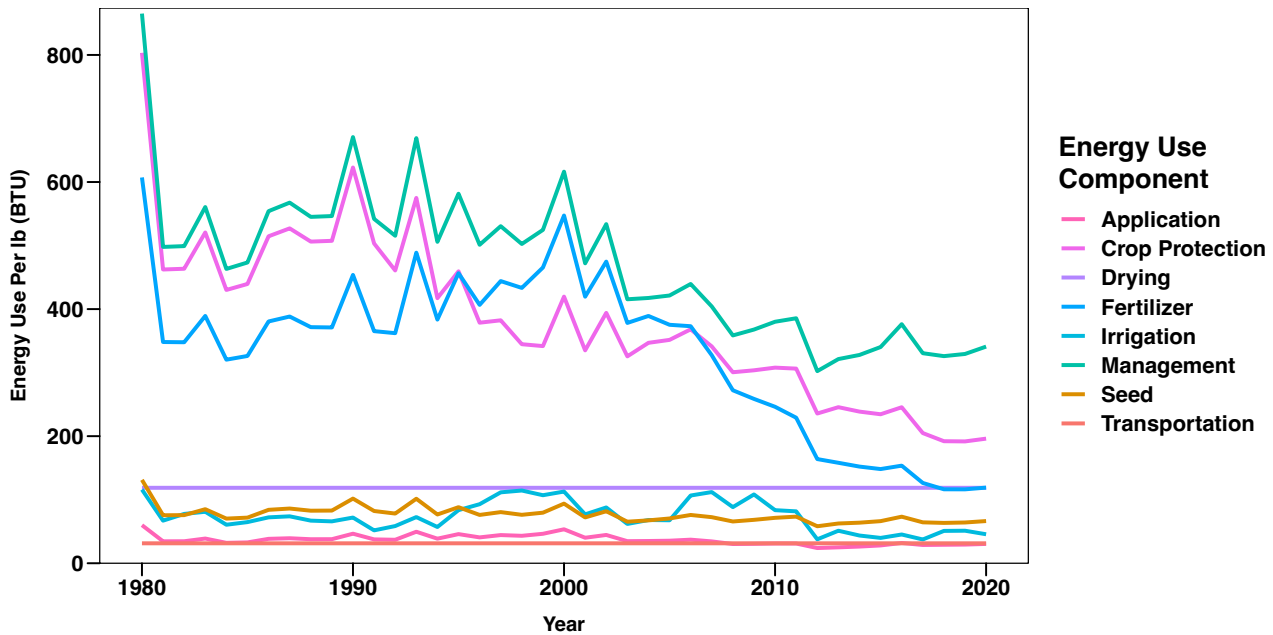


Figure B.19. Greenhouse gas emissions (lb. CO₂ Eq. / acre) for peanuts during 1980-2020

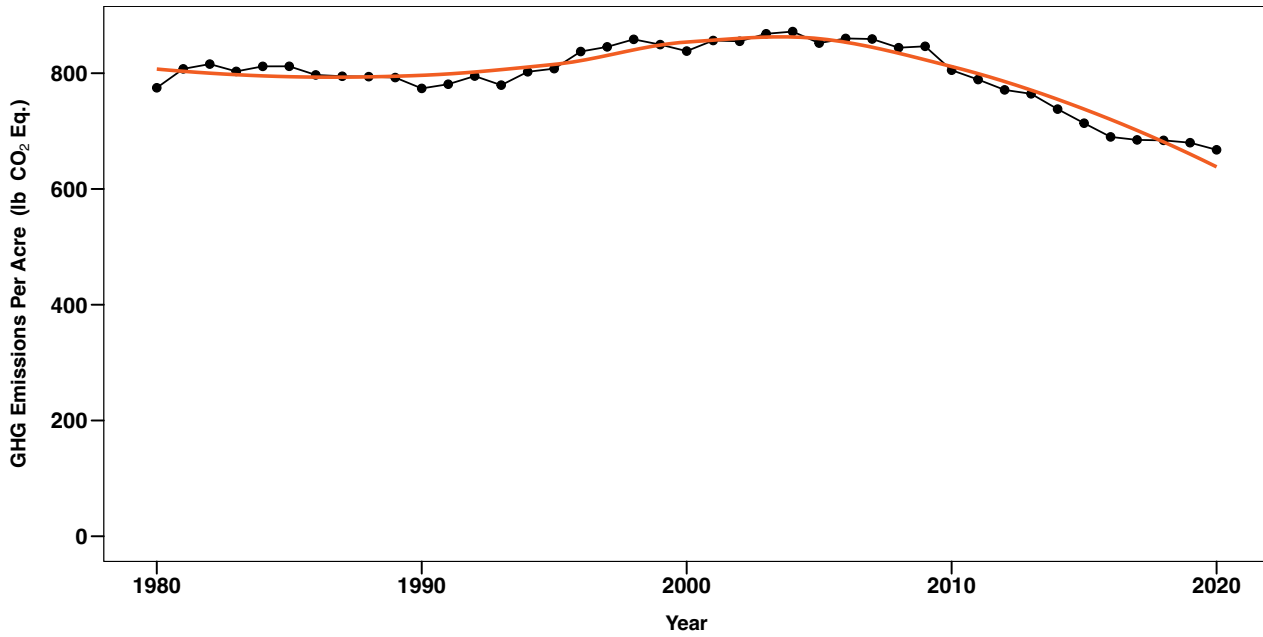
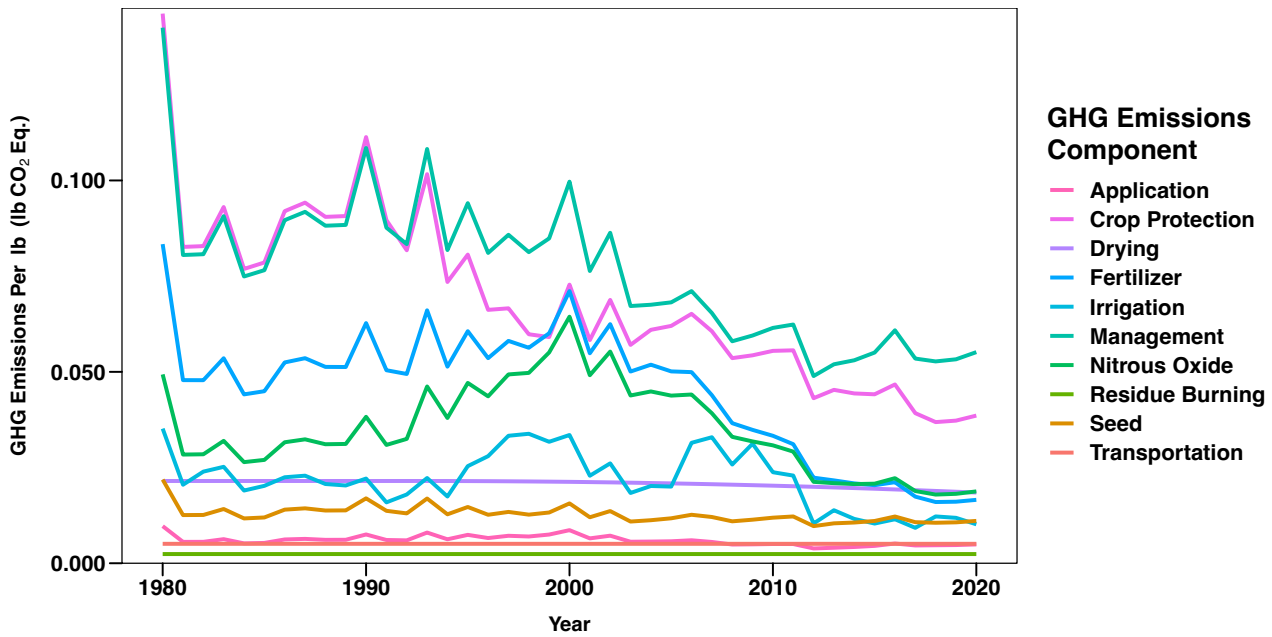


Figure B.20. GHG emission efficiency (lb. CO₂ Eq. / lb.) for peanuts during 1980-2020 colored by component



POTATOES

Figure B.21. Energy use (million BTU / acre) for potatoes during 1980-2020

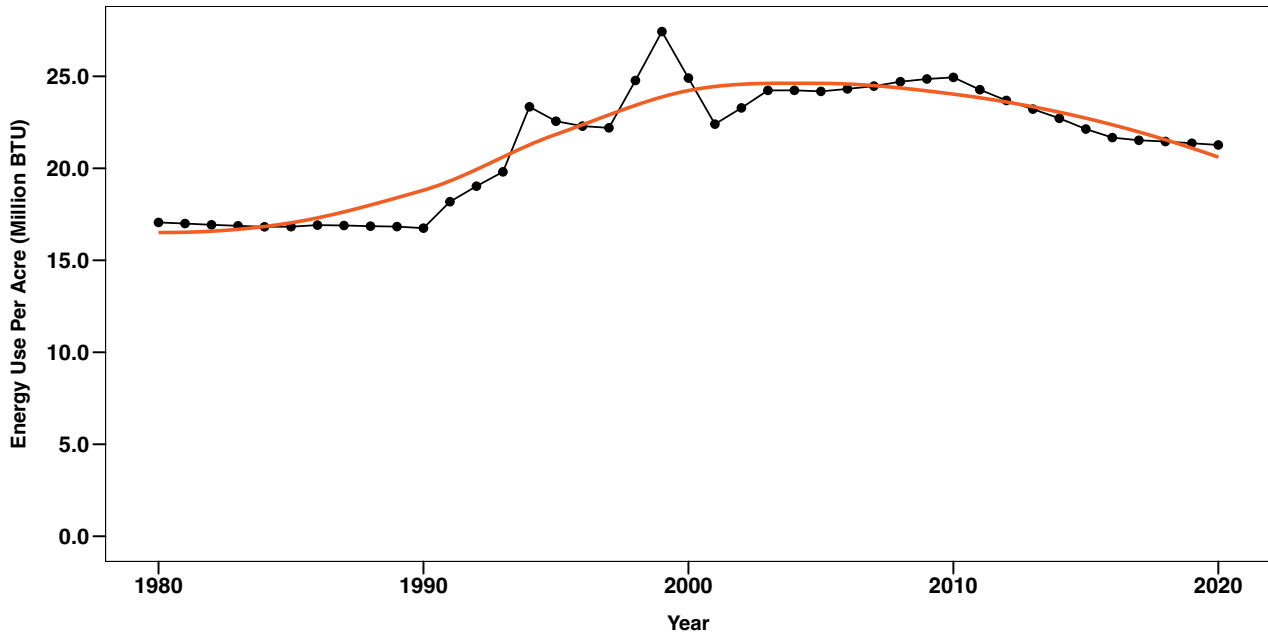


Figure B.22. Energy use efficiency (BTU / cwt) for potatoes during 1980-2020 colored by component

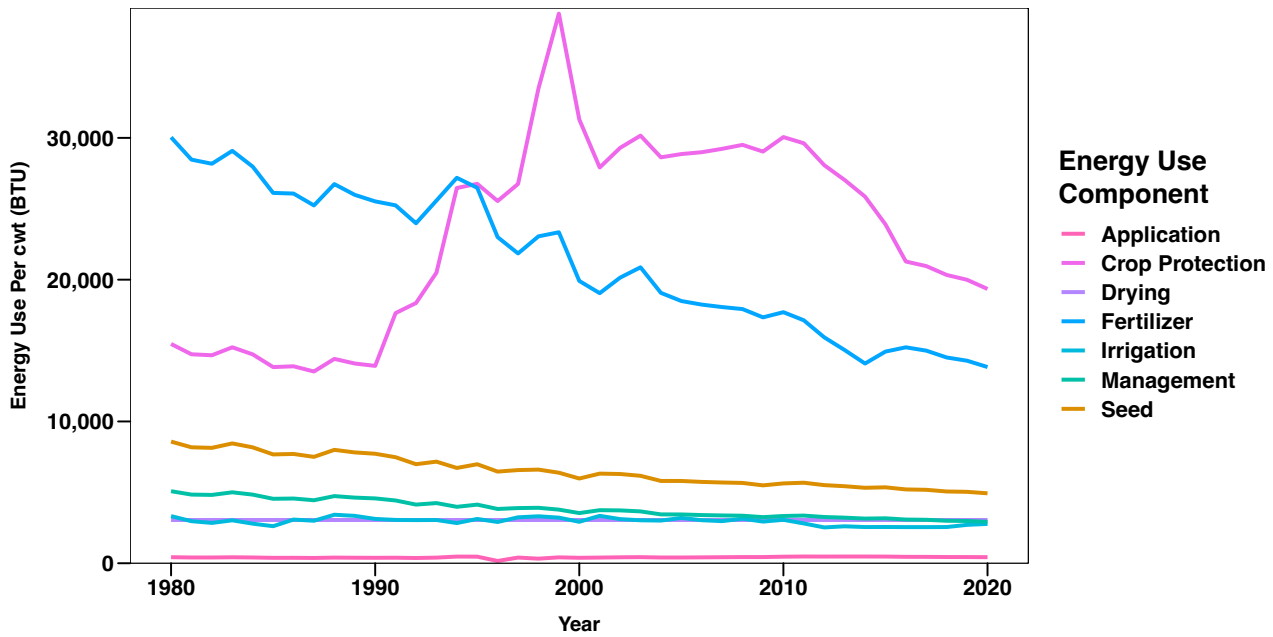


Figure B.23. Greenhouse gas emissions (lb. CO₂ Eq. / acre) for potatoes during 1980-2020

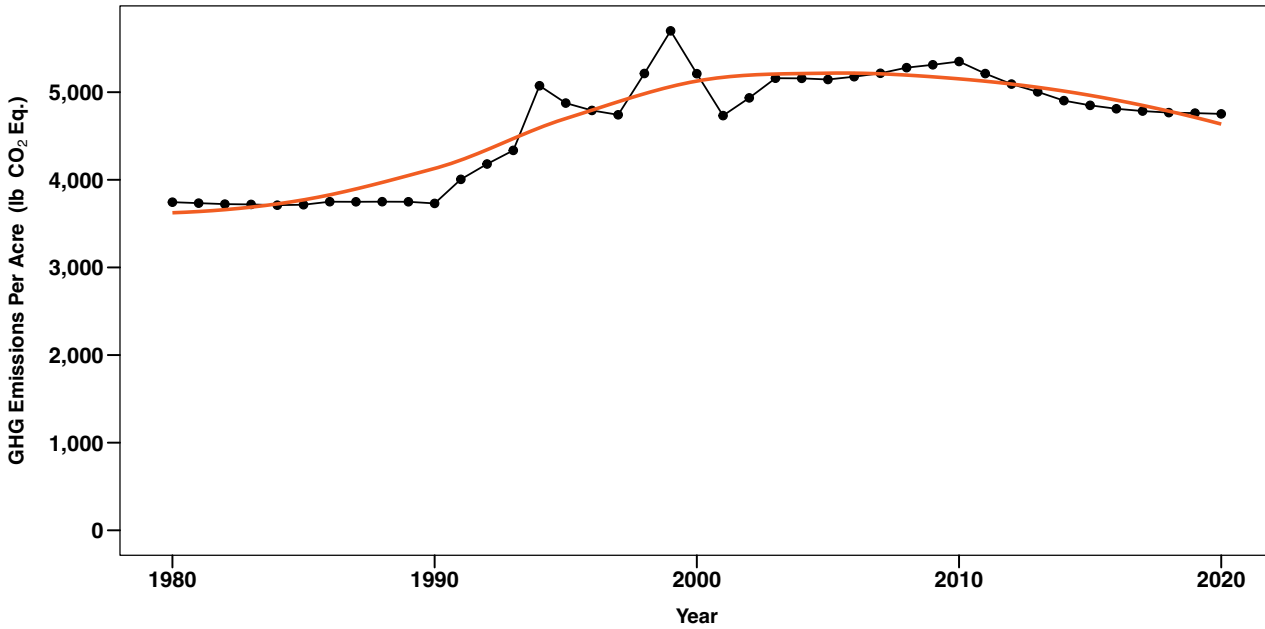
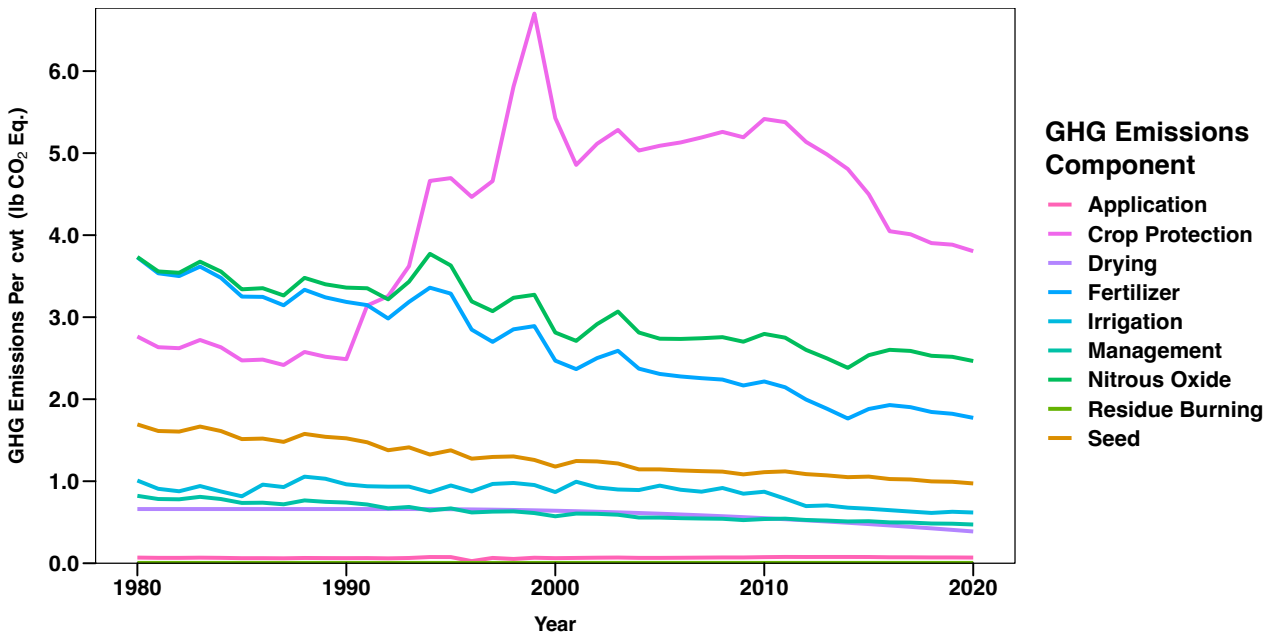


Figure B.24. GHG emission efficiency (lb. CO₂ Eq. / cwt) for potatoes during 1980-2020 colored by component



RICE

Figure B.25. Energy use (million BTU / acre) for rice during 1980-2020

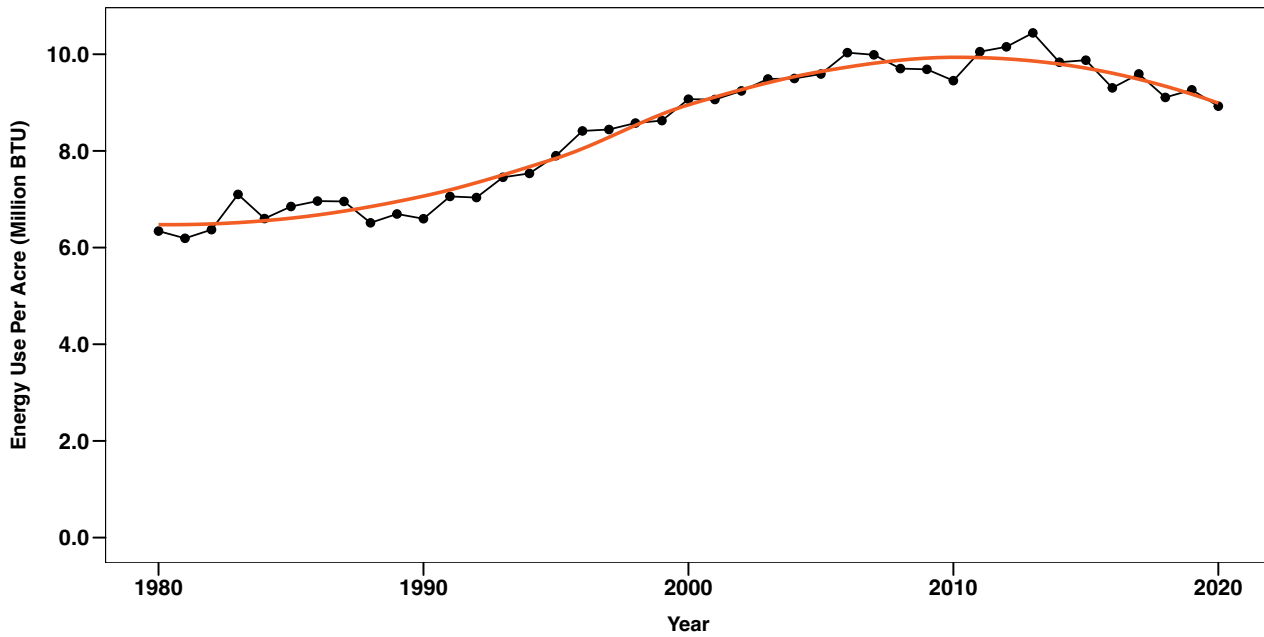


Figure B.26. Energy use efficiency (BTU / cwt) for rice during 1980-2020 colored by component

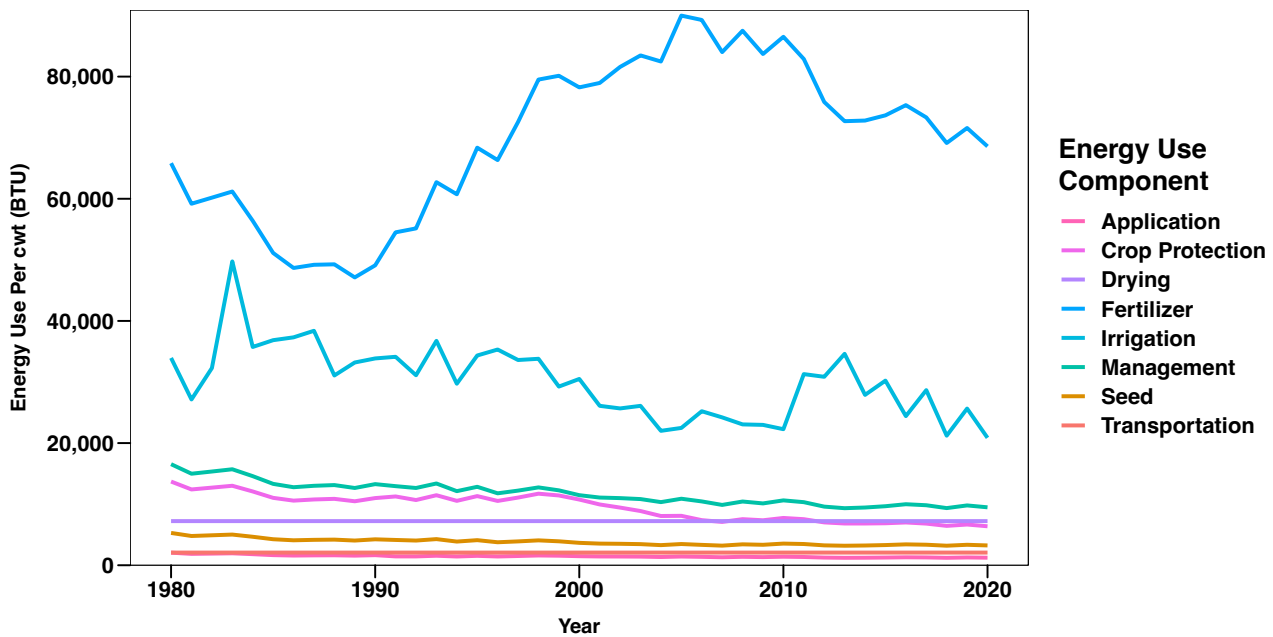


Figure B.27. Greenhouse gas emissions (lb. CO₂ Eq. / acre) for rice during 1980-2020

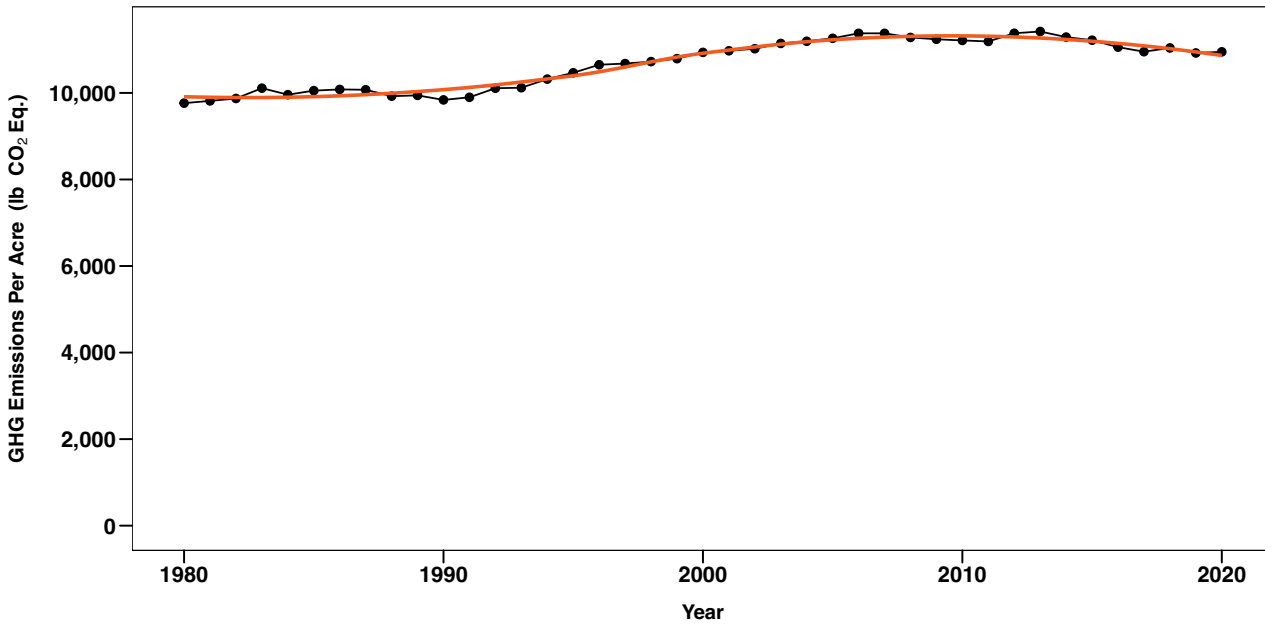
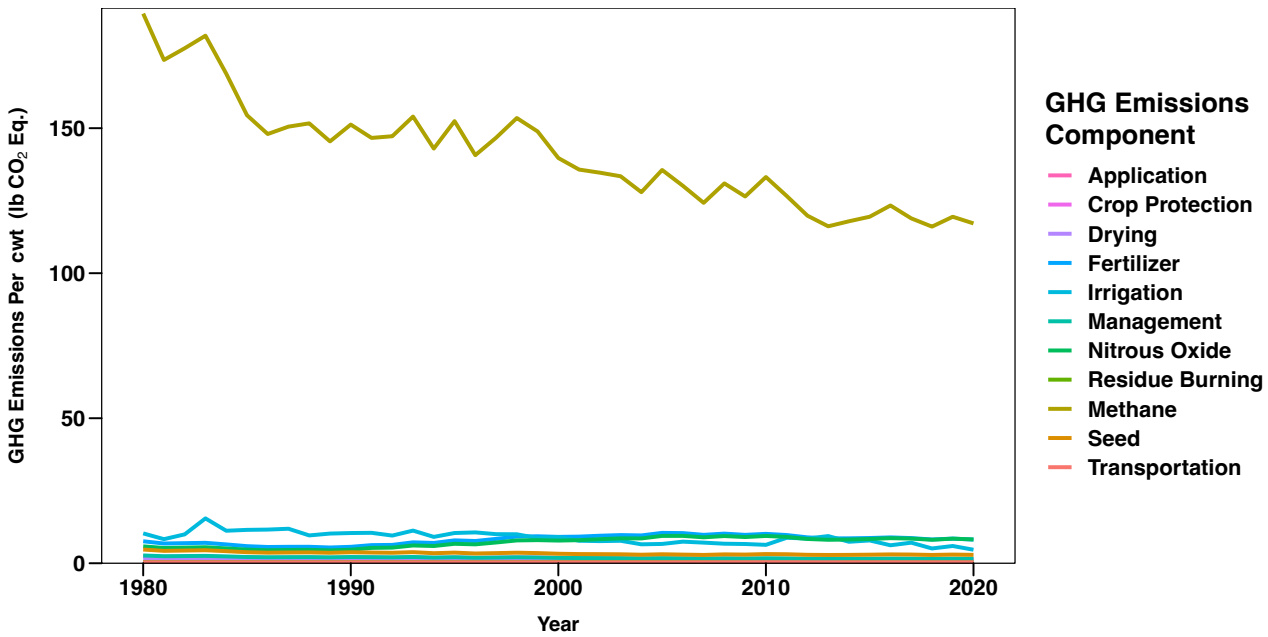


Figure B.28. GHG emission efficiency (lb. CO₂ Eq. / cwt) for rice during 1980-2020 colored by component



SORGHUM

Figure B.29. Energy use (million BTU / acre) for sorghum during 1980-2020

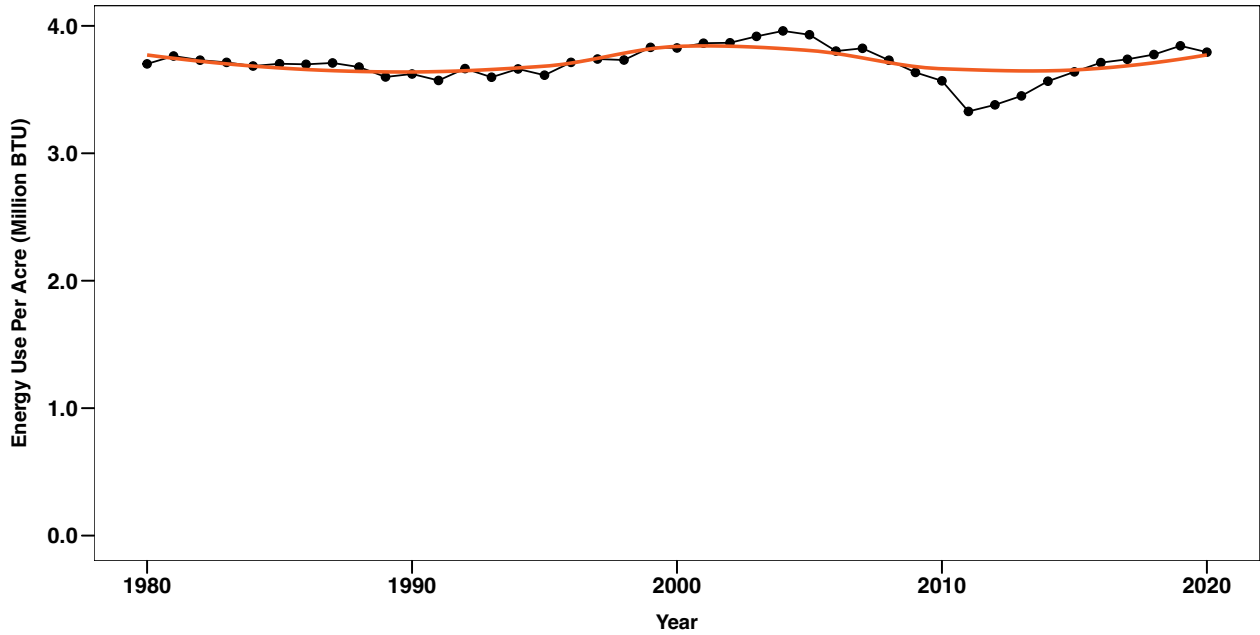


Figure B.30. Energy use efficiency (BTU / bushel) for sorghum during 1980-2020 colored by component

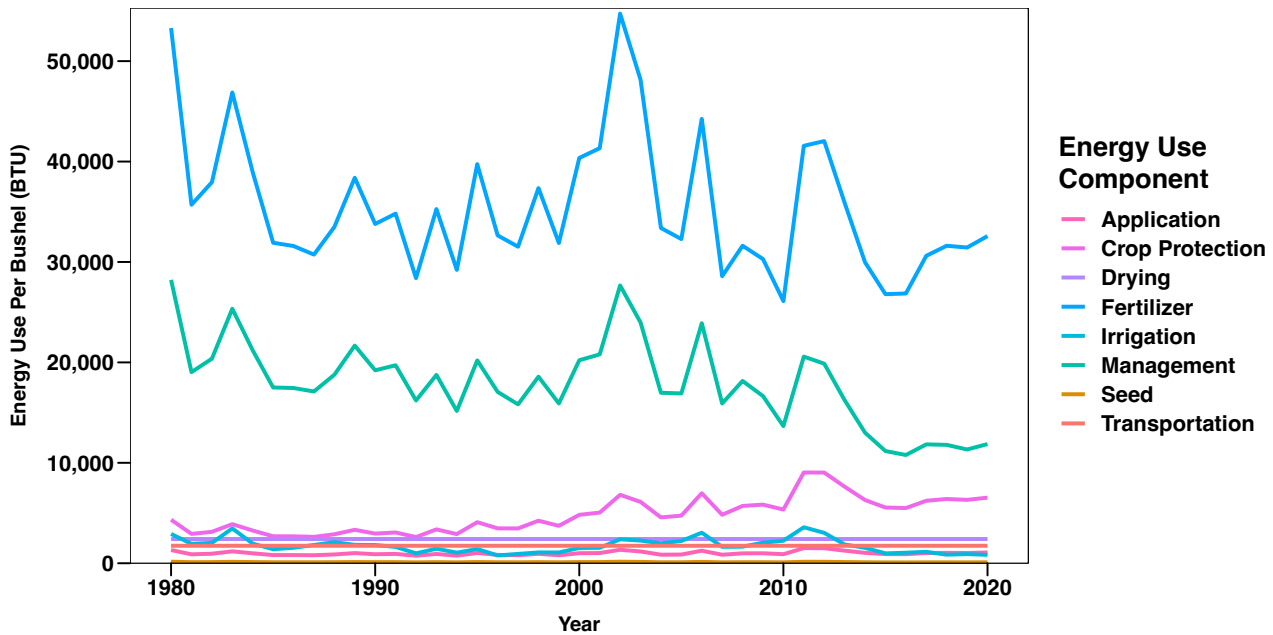


Figure B.31. Greenhouse gas emissions (lb. CO₂ Eq. / acre) for sorghum during 1980-2020

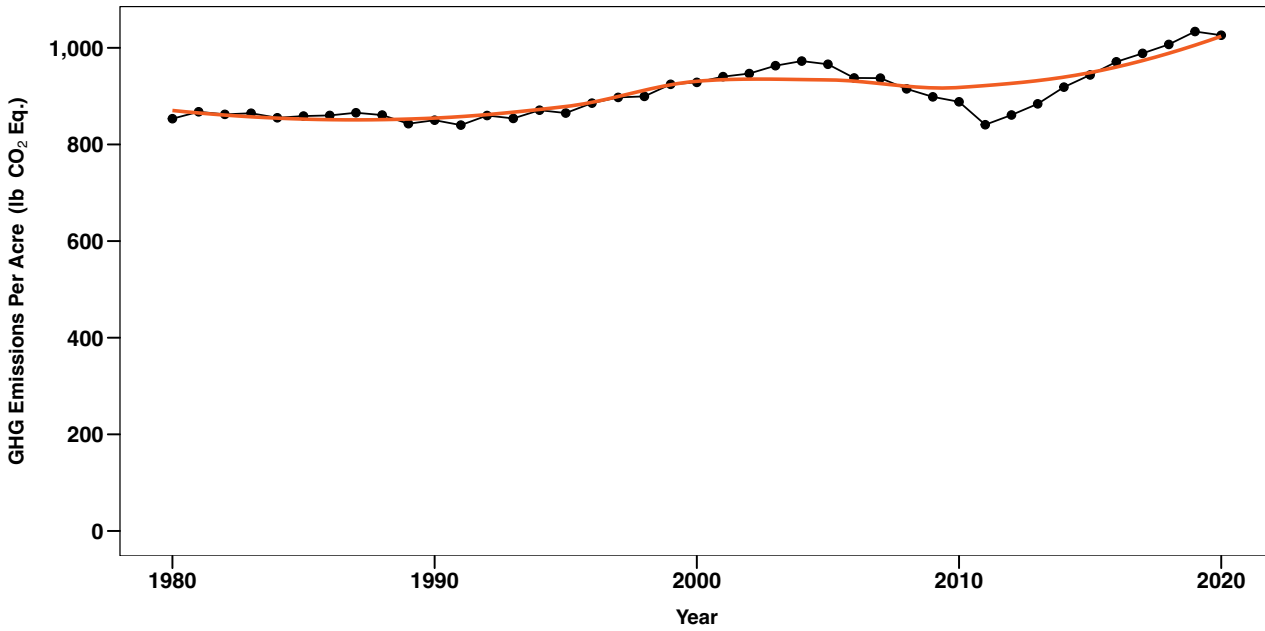
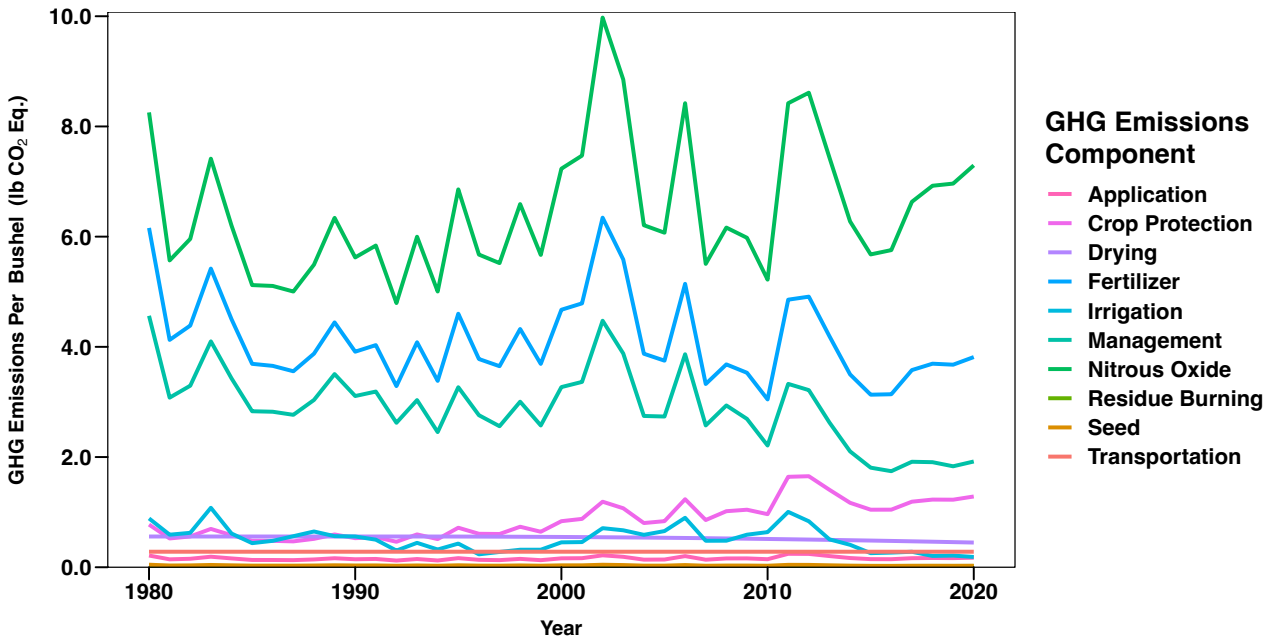


Figure B.32. GHG emission efficiency (lb. CO₂ Eq. / bushel) for sorghum during 1980-2020 colored by component



SOYBEANS

Figure B.33. Energy use (million BTU / acre) for soybeans during 1980-2020

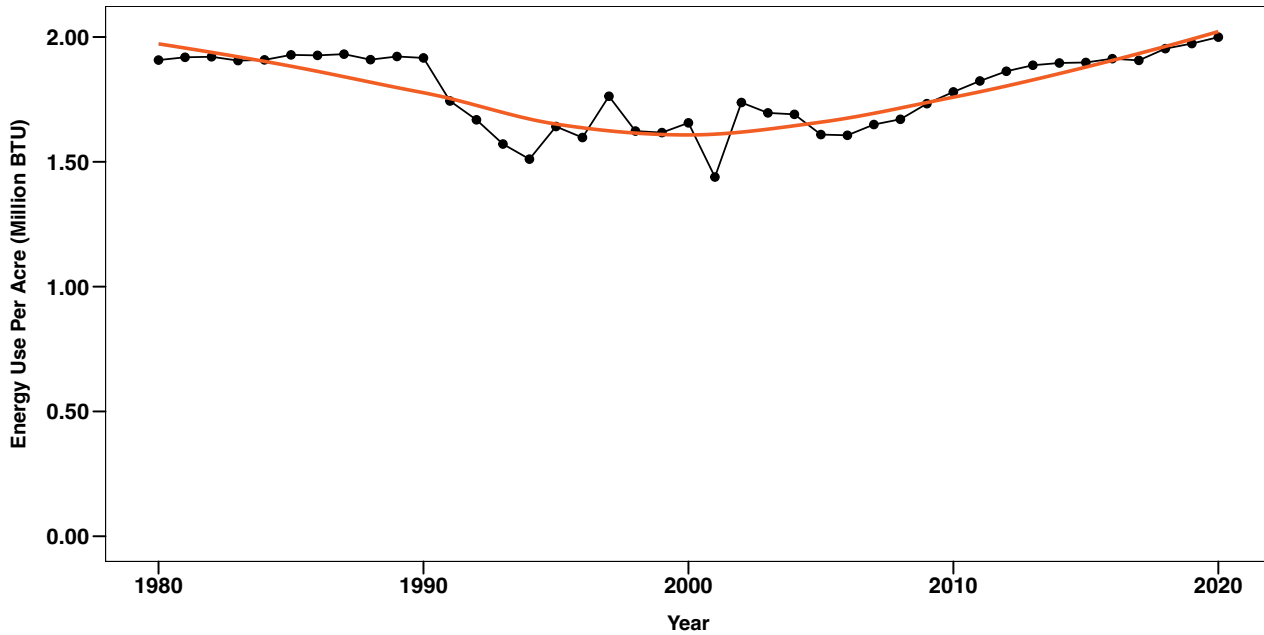


Figure B.34. Energy use efficiency (BTU / bushel) for soybeans during 1980-2020 colored by component

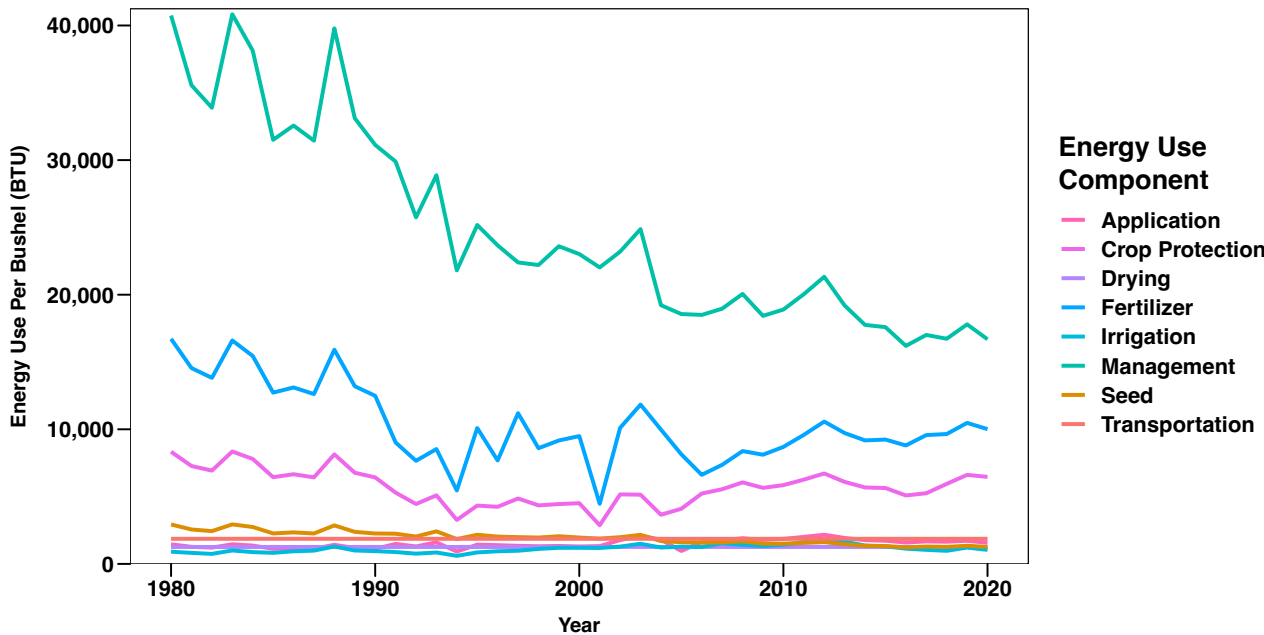


Figure B.35. Greenhouse gas emissions (lb. CO₂ Eq. / acre) for soybeans during 1980-2020

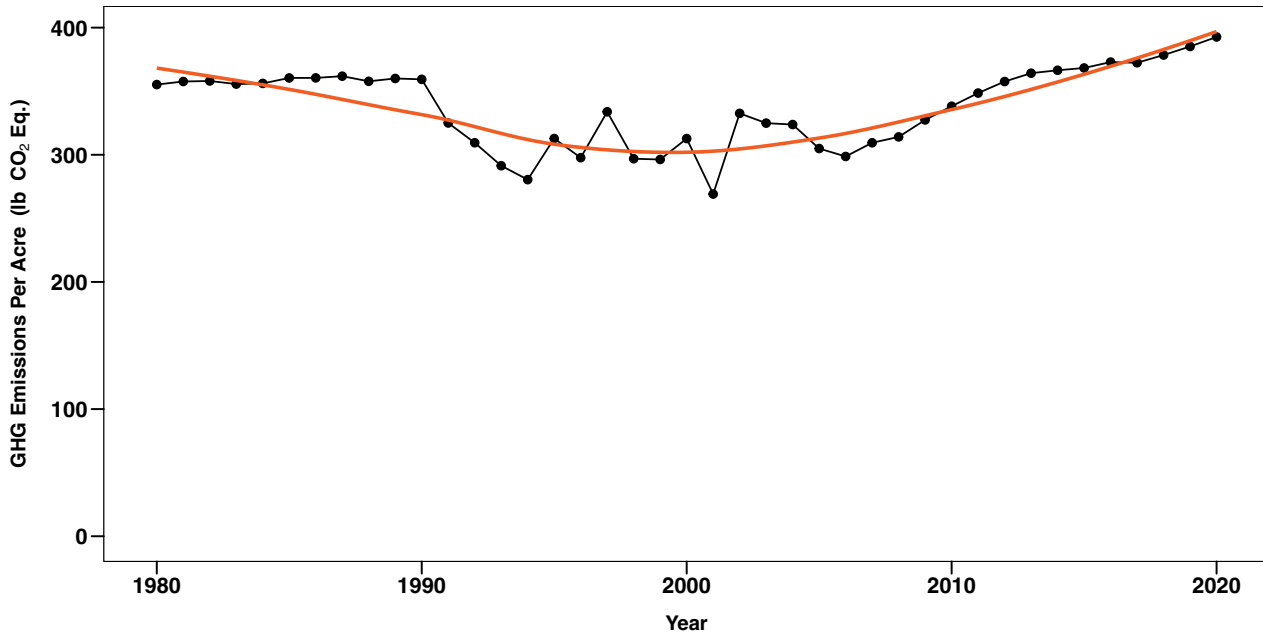
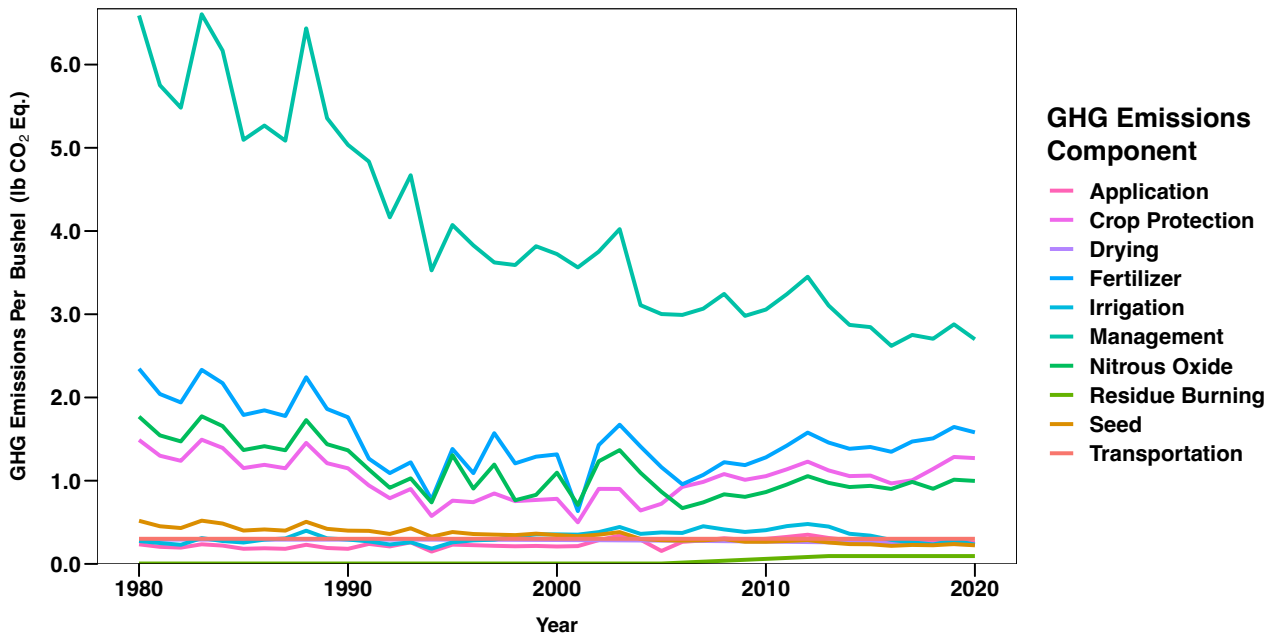


Figure B.36. GHG emission efficiency (lb. CO₂ Eq. / bushel) for soybeans during 1980-2020 colored by component



SUGAR BEETS

Figure B.37. Energy use (million BTU / acre) for sugar beets during 1980-2020

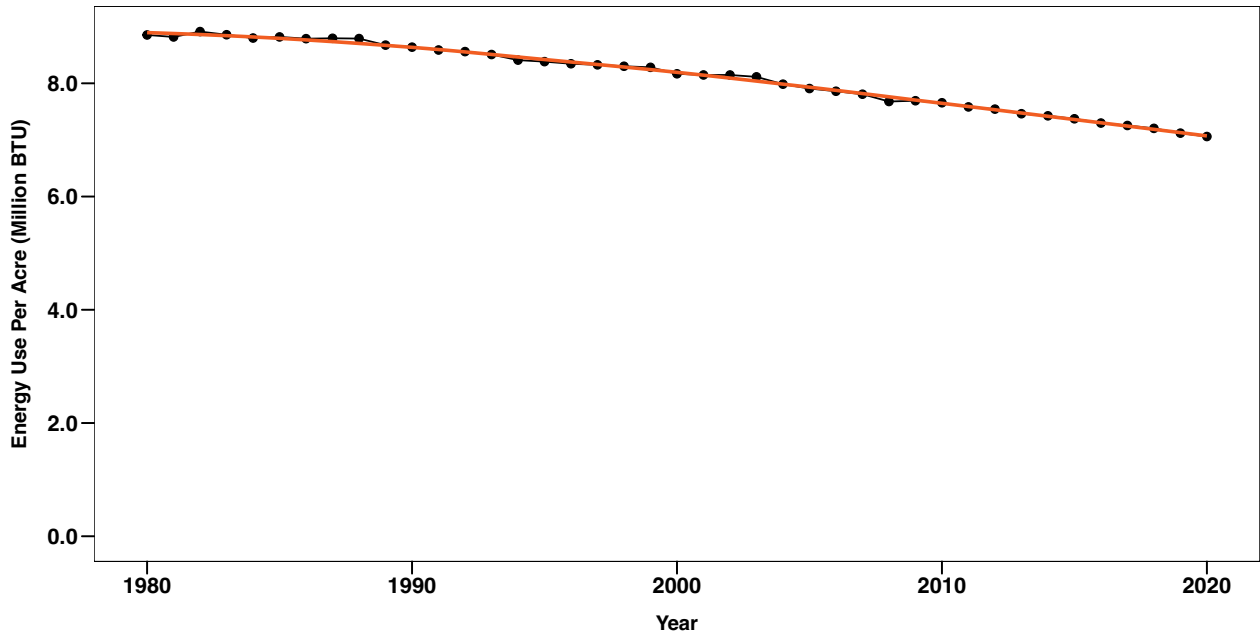


Figure B.38. Energy use efficiency (BTU / ton of sugar) for sugar beets during 1980-2020 colored by component

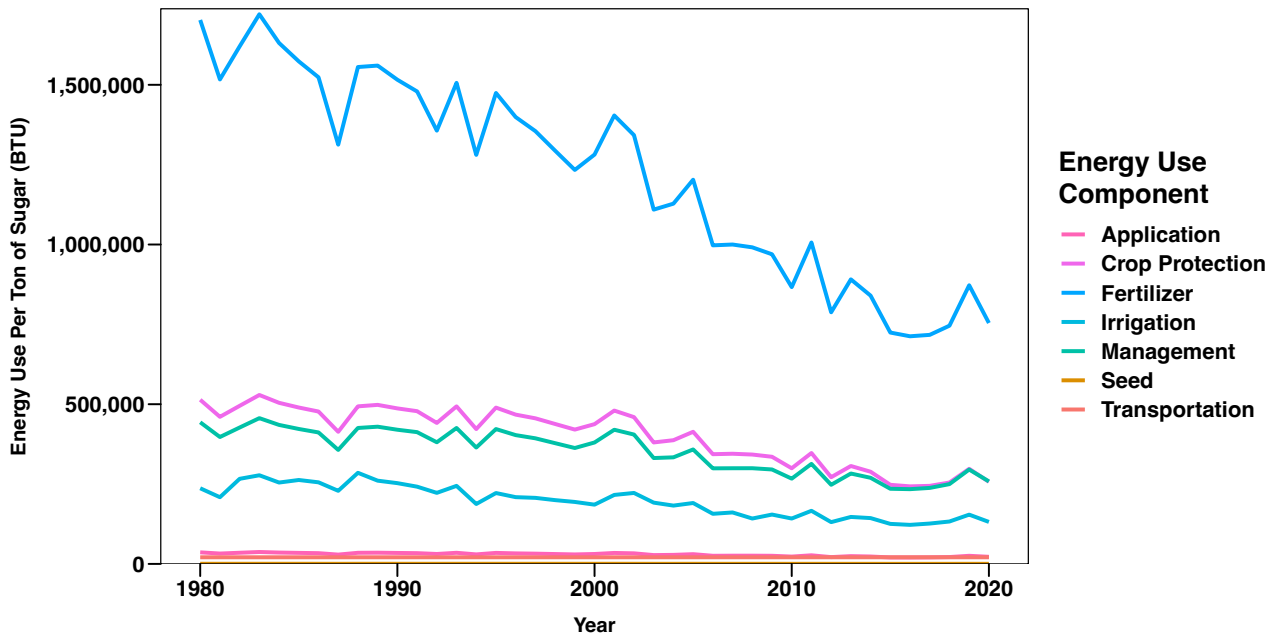


Figure B.39. Greenhouse gas emissions (lb. CO₂ Eq. / acre) for sugar beets during 1980-2020

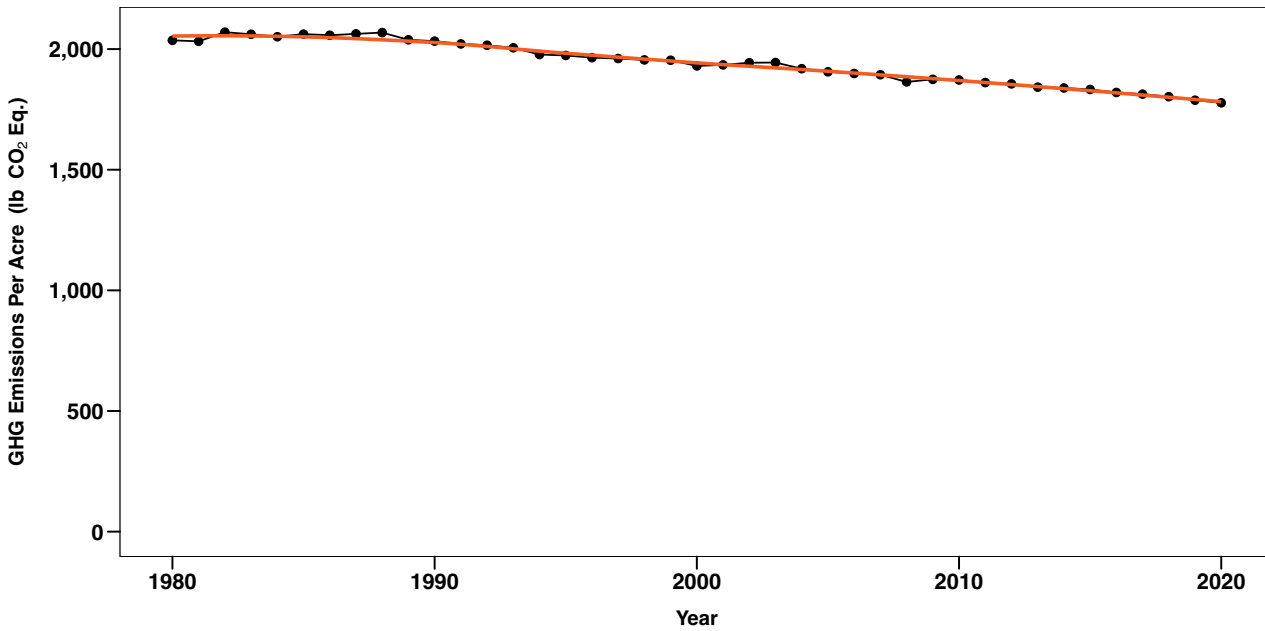
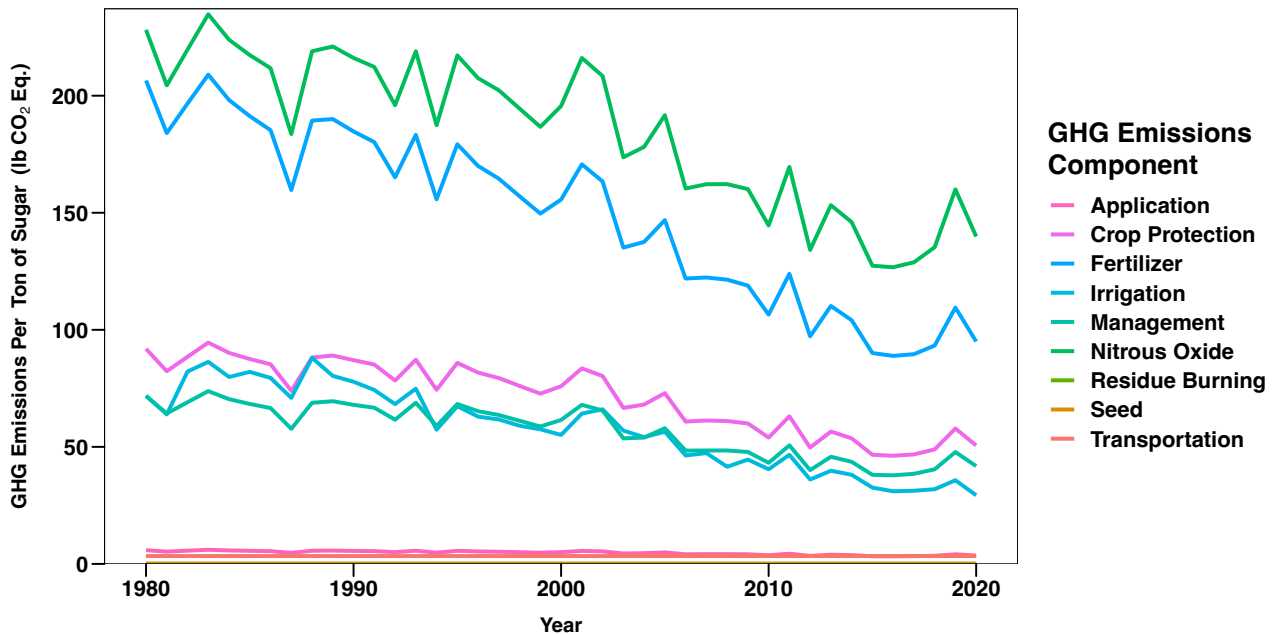


Figure B.40. GHG emission efficiency (lb. CO₂ Eq. / ton of sugar) for sugar beets during 1980-2020 colored by component



WHEAT

Figure B.41. Energy use (million BTU / acre) for wheat during 1980-2020

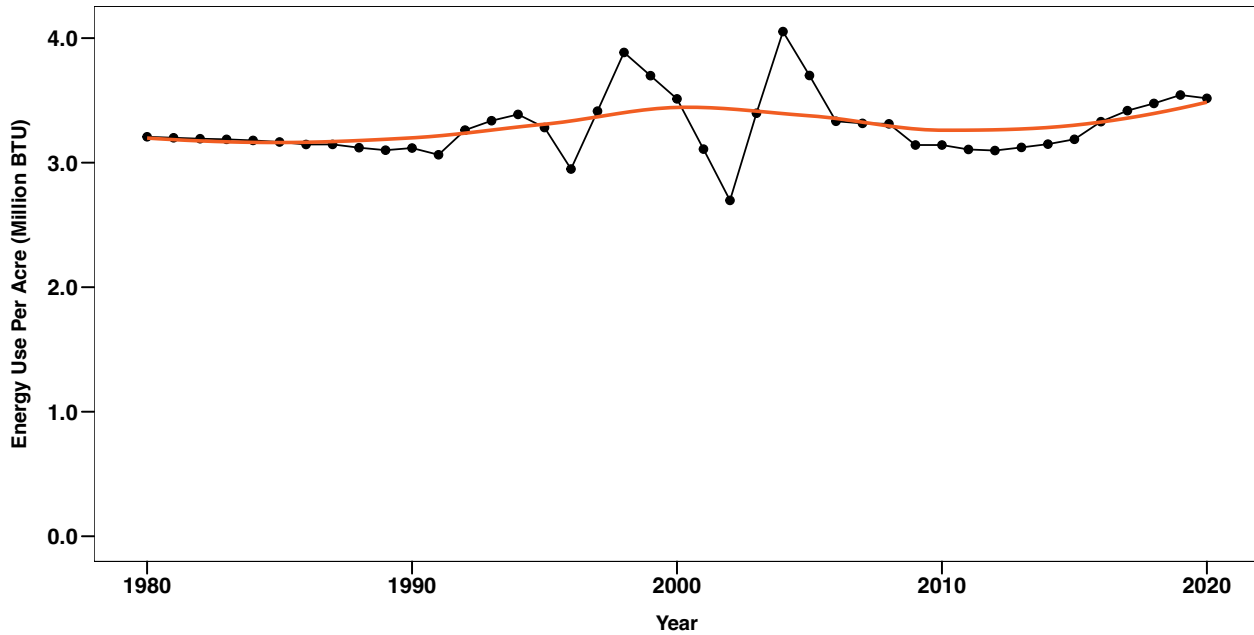


Figure B.42. Energy use efficiency (BTU / bushel) for wheat during 1980-2020 colored by component

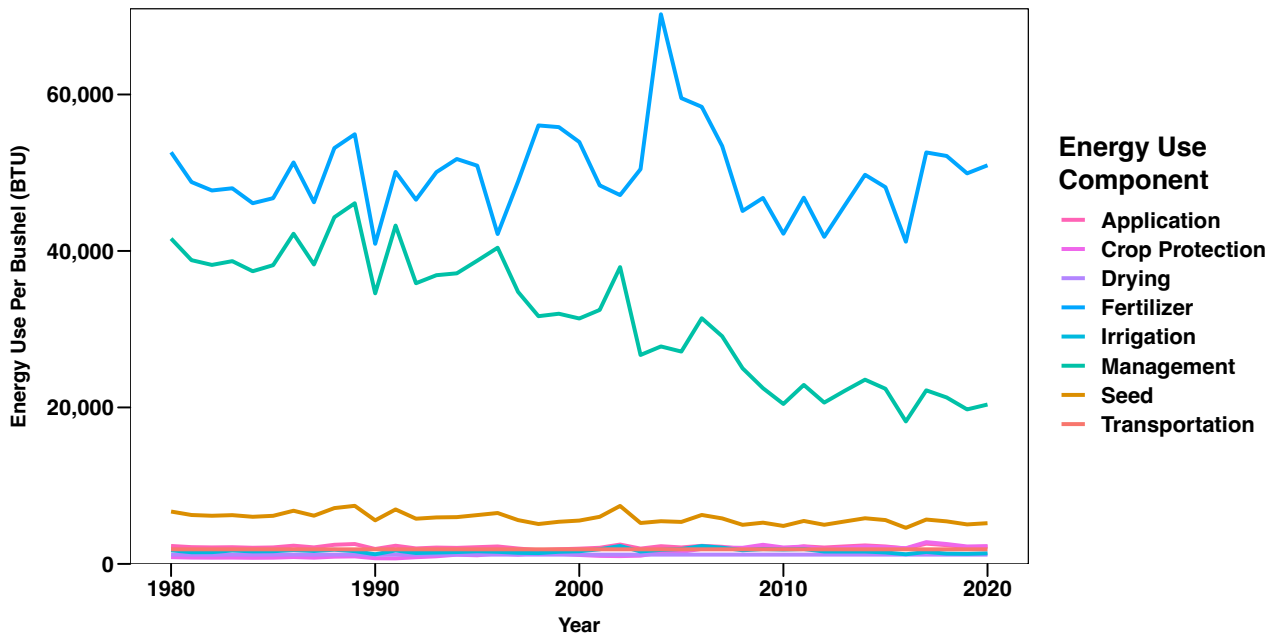


Figure B.43. Greenhouse gas emissions (lb. CO₂ Eq. / acre) for wheat during 1980-2020

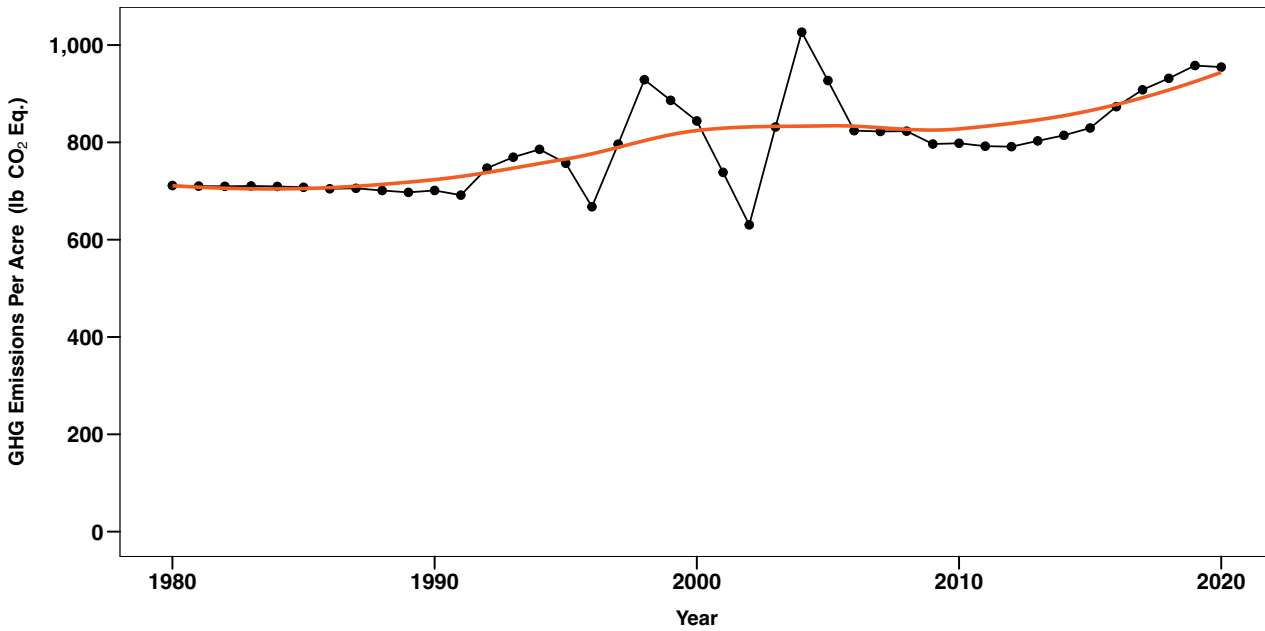


Figure B.44. GHG emission efficiency (lb. CO₂ Eq. / bushel) for wheat during 1980-2020 colored by component

